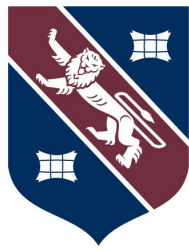


Boarding at Royal Russell



Royal
Russell

MISSION STATEMENT

Royal Russell School is a leading independent day and boarding school in south London providing exceptional opportunities for girls and boys aged 3 - 18.

Royal Russell offers the kind of high quality education that any parent would wish for their child in a stunning parkland location, which complements and enhances every learning experience. From our Junior School through to the Sixth Form, our pupils are rightly proud of their School, and their achievements during and after their time with us are a lasting testament to what they have learned.

The School's specific aims are set out in the **Mission Statement**:

Royal Russell is an inclusive school which provides a high quality academic education for our girls and boys. We seek to develop the best of our pupils, staff and families within a vibrant community; one which cares and shows mutual respect for all and celebrates the success of each individual as part of the whole.

The School's motto 'non sibi sed omnibus' (Not for oneself but for all)

All members of the School are encouraged to give of their best and to share their talents with, and for, others. The School motto, *non sibi sed omnibus*, fosters the true meaning of identity and self and challenges us to acknowledge our responsibilities and duties to the communities to which we belong; locally, nationally and internationally.

Our values:

We nurture pupils' intellectual, social, physical, artistic, cultural, moral and spiritual development, encouraging an enjoyment of learning, a spirit of enquiry and the pursuit of academic excellence, within a safe and stimulating learning environment.

We offer pupils a broad and balanced curriculum and co-curricular programme, for acquiring knowledge, understanding, skills and attitudes in preparation for Higher Education, the world of employment and lifelong learning as citizens of the world.

We promote spiritual and moral values through Christian principles, emphasising honesty, integrity, generosity, respect for other people and the environment, and an appreciation of other races, religions and ways of life.

We enhance pupils' self-awareness and self-confidence, enabling them to develop their leadership skills; to value their own and others' efforts and achievements and to develop a sense of care and responsibility for the School community and for wider society.



Royal Russell School is set in over 110 acres of beautiful parkland where pupils benefit from a university style campus

A WARM WELCOME FROM CHRIS HUTCHINSON, HEADMASTER



Welcome to Royal Russell.

I am delighted you are considering Boarding at Royal Russell School.

Our happy, vibrant and forward-looking community provides our girls and boys, from 3 to 18 years, with an outstanding range of exciting opportunities.

Our academic ambition and our focus on each individual's talents and strengths ensures success at each stage of the learning journey, through to the Sixth Form and university beyond.

We have outstanding teaching and classroom staff who give their expertise, their knowledge, their time and of themselves to ensure that we achieve every possible success for our pupils. At Royal Russell we ensure that our pupils are encouraged, nurtured and, if necessary, driven to achieve their goals. In the classroom, the Houses and in the myriad of challenges and opportunities that our pupils experience, it is the guidance and inspiration of our teaching staff that enriches the experience of us all.

We recognise that there is more to a successful school life than academic achievement alone and it is the quality of the relationships at Royal Russell, coupled with the 'can-do' attitude of the girls and boys that make me proud to be their Headmaster.

Our pupils are our School, our soul, our character, our lifeblood, sweat and tears. Their enthusiasm for learning, support of each other, skills, talents, effort and successes are what binds us together and makes Royal Russell such an extraordinary school.

I look forward to welcoming you into our community.

A handwritten signature in black ink that reads "Chris Hutchinson".

Chris Hutchinson
Headmaster

INDEPENDENT SCHOOLS INSPECTORATE (ISI) INSPECTION 2016

TOP GRADE OF 'EXCELLENT' ACHIEVED IN EVERY CATEGORY

Royal Russell School is inspected regularly by the Independent Schools' Inspectorate (ISI), a body appointed by the Secretary of State, in a similar way OFSTED inspect schools in the maintained sector. The ISI report covers compliance with all of the regulations relevant to our School and also comments on the quality of the education provided, focusing on the outcomes for pupils.

Our ISI inspection, in April 2016, comprised of a team of 12 inspectors who spent 4 days at the school and scrutinised every aspect of our provision. They observed lessons, interviewed pupils and examined samples of pupils' work. They met with staff, governors and parents and attended assemblies and activities.

As we are a school for pupils age 3 to 18, the final report comments on all aspects of the Junior School and Senior School together, including our provision for Boarding and the Early Years Foundation Stage (EYFS).

9 individual areas are reported on alongside our provision for the EYFS. In each area a judgement is made using the ISI grade descriptors: excellent, good, satisfactory or unsatisfactory.

The Quality of Academic and other Achievements

The quality of the pupils' achievements and learning	Excellent
The contribution of curricular and extra-curricular provision	Excellent
The contribution of teaching	Excellent

The Quality of the Pupils' Personal Development

The spiritual, moral, social and cultural development of the pupils	Excellent
The contribution of arrangements for pastoral care	Excellent
The contribution of arrangements for welfare, health and safety	Excellent
The quality of boarding education	Excellent

The Effectiveness of Governance, Leadership and Management

The quality of governance	Excellent
The quality of leadership and management, including links with parents, carers and guardians	Excellent

The Early Years Foundation Stage

Excellent

A few of the many highlights from the report are shown below:

The school is highly successful in meeting its aim to provide an outstanding academic education and an extensive range of co-curricular activities in the context of a family School. Throughout the school, from the EYFS to the sixth form, pupils' achievement in academic subjects is excellent.

At all ages, pupils' spiritual, moral, social and cultural development is excellent, they are self-aware, confident, tolerant and respectful. Relationships throughout the school are excellent.

Pupils throughout the Junior and Senior Schools are particularly well educated and show excellent levels of subject knowledge, skill and understanding in line with the school's aim to provide an outstanding academic education. Pupils are skilled learners, displaying excellent levels of creativity, logical thought and independence.

Throughout the School, pupils show initiative and they express ideas and understanding of concepts with refreshing ease.

The outcomes for boarders are excellent and reflect successful implementation of boarding aims and principles.

We thoroughly enjoyed the inspection experience and the opportunity to showcase all that makes Royal Russell unique. We are thrilled with the report and immensely proud of all our pupils and staff, who work to achieve their very best at all times and have received well-deserved recognition of their efforts.

ROYAL RUSSELL EXAMINATION PERFORMANCE 2017

A Level

This was an excellent year for our Sixth Form. 85 candidates sat 269 A levels this summer. All our students accepted places at the university of their choice to study a diverse range of courses.

Our top performers included:

Ella	A* A* A	Journalism, University of Leeds
Tommy	A* A* A A	Biomedical Engineering at Imperial College London
Rachel	A* A* A A	Mathematics with Management and Finance at Kings College London
Stella	A* A* A A	Mathematics, Operational Research, Statistics & Economics at Warwick University
Jason	A* A* A B	Computer Science at University College London
Bobby	A* A* A B	Artificial Intelligence and Mathematics
Amelie	A* A* B B	Accounting and Finance (with a professional placement)
Alexander	A A A A	Natural Sciences at the University of Nottingham
Jing	A A A B	Fine Art at Edinburgh University
Valeriya	A A A B	New York Film Academy
Bogdan	A* A* B	Computer Science at Southampton University
George	A A A	Football Coaching and Management at University of Buckingham
Roman	A* A A B	Computer Science (with an Industrial Year) Birmingham University
Aidan	A* A B	Law at the University of Nottingham

GCSE

109 candidates sat for a total of 1001 GCSE awards. The overall A* - A grade % is an impressive 44% and there are some particularly strong sets of results at the top end of the cohort:

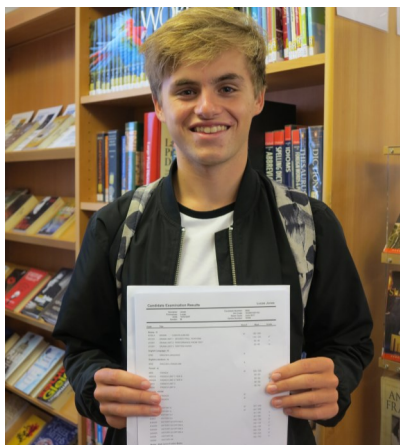
The A*/A pass rate for the top 25 candidates was 86%.

The A*/A pass rate for the top 50 candidates was 70%.

Our top performing pupil achieved 14 A* and there are over 20 candidates who have at least 4 A* grades. This puts Royal Russell comfortably within the top 10% of co-educational schools in the country.

Individual success was evident at all levels of the academic spectrum and it was pleasing to see a good mix of girls and boys, and day and boarding pupils amongst our top performers. All our young people have worked hard and achieved the success they deserved.

I am equally proud of all our pupils, and of our teaching and support staff who have provided direction, guidance and continually raised the aspirations of this group to ensure they achieved their best results.



UNIVERSITY DESTINATIONS 2017

UNIVERSITY/COLLEGE	COURSE TO BE STUDIED
Aberystwyth University	Environmental Earth Science
Aston University	Business and Management
Aston University	Business and Supply Chain Management
University of Bath	Accounting and Finance (with a Professional Placement)
University of Bath	Computer Systems Engineering
Bath Spa University	Drama Studies/Education
Bath Spa University	Film, Television and Digital Production
Birmingham University	Computer Science (with an Industrial Year)
Bournemouth University	Accounting and Business
Bournemouth University	Business Studies
Bournemouth University	Economics
Bournemouth University	Law
Bournemouth University	Sports Management
University of Buckingham	Football Coaching and Management (UCFB)
César Ritz	Hospitality Management
De Montfort University	Music, Technology and Performance
Dundee University	Finance
Dundee University	Mechanical Engineering
University of East Anglia	Environmental Earth Sciences (with a Year Abroad)
University of East Anglia	History
Edinburgh University	Artificial Intelligence and Mathematics
Edinburgh University	Fine Art
Edinburgh University	Law and Spanish
Falmouth University	Fine Art
Greenwich University	Photography
Imperial College London	Biomedical Engineering
Keele University	Law, Politics with Social Science Foundation Year
University of Kent	French
University of Kent	International Business
University of Kent	Philosophy and Politics
University of Kent	Politics and International Relations
University of Kent	Psychology with Clinical Psychology
University of Kent	Sport Management
Kings College London	Mathematics with Management and Finance
Lancaster University	Film Studies
University of Leeds	Film, Photography and Media
University of Leeds	Journalism

UNIVERSITY DESTINATIONS 2017

UNIVERSITY/COLLEGE	COURSE TO BE STUDIED
University of Leicester	Economics
University of Leicester	Management Studies
Lincoln University	Product Design
l' Institut d'Etudes Politiques de Paris	Le Diplôme du College Universitaire de Sciences Po
Middlesex University	Fine Art (with Integrated Intensive Foundation Year)
Newcastle University	Accounting and Finance (with Placement)
University of Nottingham	Law
University of Nottingham	Natural Sciences
Plymouth University	Law with Criminology and Criminal Justice Studies
Plymouth University	Physical Geography and Geology
University of Portsmouth	Business Information Systems
University of Portsmouth	Criminology with Psychology
University of Portsmouth	International Relations and Politics
University of Portsmouth	Quantity Surveying
Queen Mary, University of London	Computer Science
Queen Mary, University of London	Pharmaceutical Chemistry
Regent's Business School London	Global Management (Leadership and Management)
University of Reading	Building Surveying
University of Reading	Business and Management
University of Reading	Food Science with Industrial Training
University of Reading	Politics and International Relations
University of Reading	Real Estate
Roehampton University	English Literature
Royal Agricultural University	Animal Management and Zoology
Royal Holloway, University of London	Economics
Salford University	Aviation Technology with Pilot Studies
SOAS, University of London	History
Solent University	Film Production
Southampton University	Computer Science
University of Surrey	Business Management
University of Surrey	Economics
University of Surrey	Economics and Mathematics
University College London	Computer Science
Warwick University	Accounting and Finance
Warwick University	Economics
Warwick University	Mathematics, Operational; Research, Statistics, Economic
University of York	Theatre: Writing, Directing and Performing

ART AND DESIGN

INTRODUCTION

Art and Design is taught throughout the School in mixed ability groups. The Department has highly experienced staff and a proven track record of success. This dynamic and fascinating subject offers creative and imaginative activity in a predominantly practical context. Pupils experience analytical thinking, problem solving and visual perception through theme based projects. There is an emphasis on experimentation and development of an independent work ethic.

We teach a diverse range of skills from drawing, painting, printmaking, digital photography, sculpture and textiles. Pupils have a wide range of equipment at their disposal including a kiln for ceramic projects, reproduction equipment, digital cameras and photo editing software suites.

Our Art Studios are situated for maximum light and the Department has facilities to work on large scale projects.

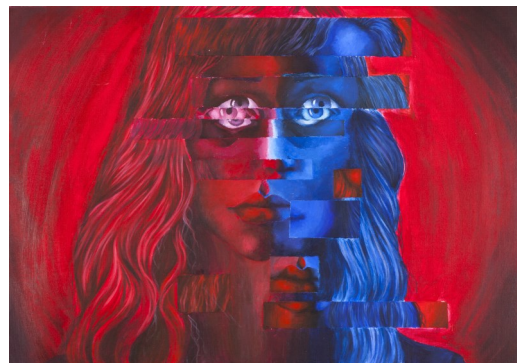
Whilst educational visits are an integral part of our teaching, our pupils are also able to make full use of our picturesque woodland environment.

KEY POINTS

- Life skills through visual and spatial education
- Transferrable skills for a range of occupations
- Development of analytical skills and critical visual judgement and perception
- Exposure to a wide range of skills, processes and techniques, using both traditional and new media.

SUCCESS

Many pupils continue their education in Art following A level and progress to study careers such as fashion, architecture, photography and graphic design. Pupils find our advanced courses stimulating and broadening.



BIOLOGY

INTRODUCTION

The Biology Department is part of a thriving Science Department at Royal Russell.

Pupils in Years 7 and 8 have Science lessons rather than separate Biology, Chemistry and Physics lessons. These lessons allow for the development and understanding of general principles and concepts in all three Science areas, as well as the practical skills which will develop as they progress through the School.

IGCSE

The IGCSE Science course begins in Year 9. Biology is taught as a separate subject by a specialist Biology teacher. Pupils complete their examinations in Year 11 allowing them to achieve an IGCSE in Biology as well as in Chemistry and Physics.

The IGCSE Biology course covers a broad range of topics. These include Human Biology topics such as the digestive, circulatory, nervous and respiratory systems as well as genetics, methods of reproduction, photosynthesis and ecology. This course gives pupils the opportunity to explore a diverse range of biological topics which provides a thorough foundation should the pupils choose to continue studying Biology at A level in Years 12 and 13.

A LEVEL

A level Biology is both fascinating and challenging. Topics such as cell biology, genetics, respiration, photosynthesis and many others are studied in greater detail.

A world of exciting and popular opportunities are available to Biology graduates following university and can lead to careers in medicine, biochemistry, wildlife conservation and veterinary professions, zoological disciplines and marine biology to name but a few.

Biology lessons are held in well-resourced laboratories within the Science block. The extensive school grounds are used for fieldwork.

A level Biology pupils attend a five day residential course at a field centre in Devon.



BUSINESS STUDIES

INTRODUCTION

Business Studies is taught at GCSE, BTEC and A level following the Edexcel syllabus.

At GCSE we assess the challenges faced by start-up businesses, how to overcome them and how businesses maintain successful growth.

At A level pupils learn about business strategies and how businesses must adapt to changes in their internal and external environment.

Pupils should have a keen interest in current business issues as they try to answer questions such as:

- How will Apple cope with the threat of Samsung?
- How will Brexit impact on business strategy?
- Should companies merge?
- How should businesses cope with falling growth rates in many economically developing nations?
- Will Aldi continue to see profit growth as the UK economy recovers?

Business theories are used to analyse and evaluate the range of questions mentioned above.

ENRICHMENT AND CO-CURRICULAR

The Department runs trips and events throughout the academic year.

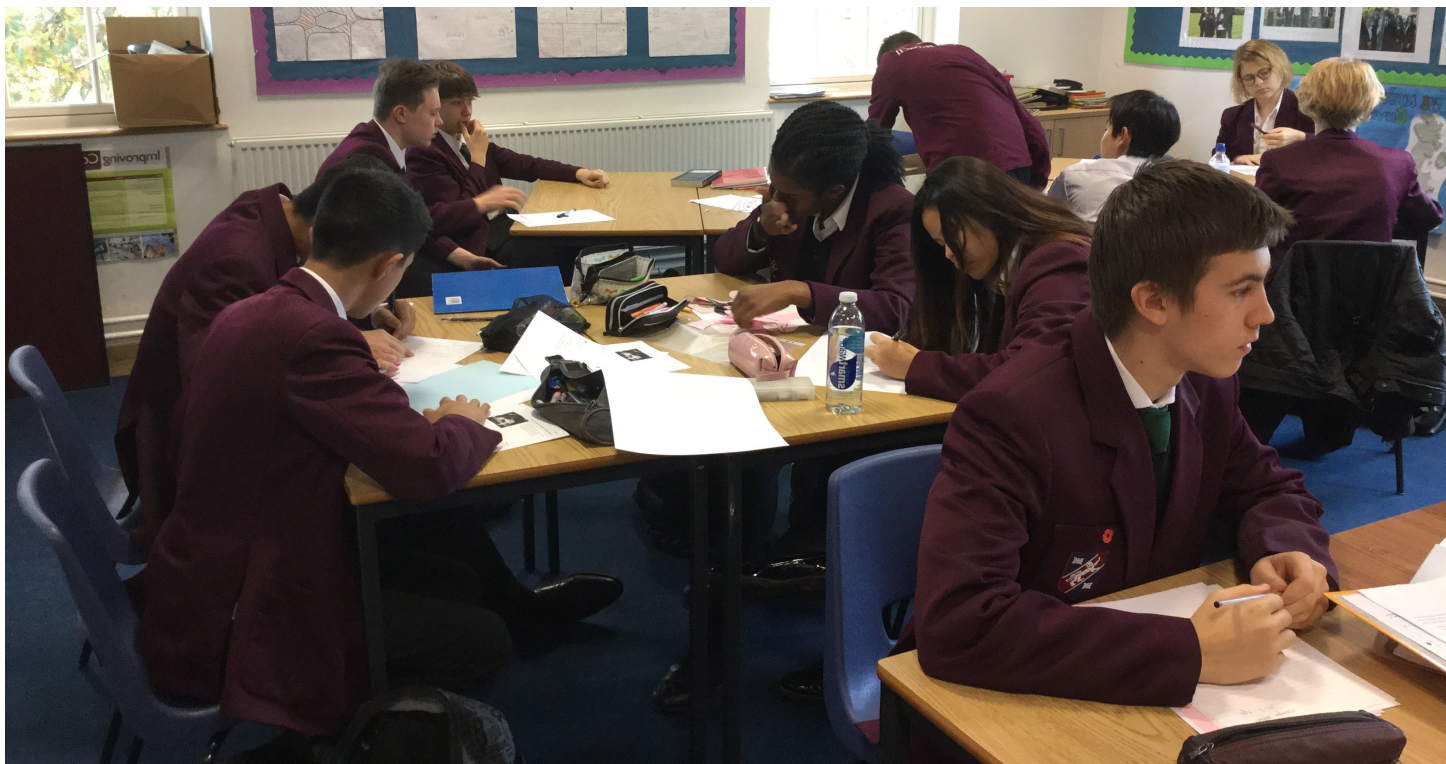
These include:

- Business Studies conferences with highly respected speakers in the field
- Visits to Surrey University where pupils participate in Junior Dragons' Den and Apprentice competitions
- A visit to Bloomberg to see how the organisational culture, structure and leadership styles impact on the performance of the business
- Pupils are also given the opportunity to form and run a model business.

DESTINATIONS

The majority of A level pupils continue to study Business related subjects at university.

Most areas of finance, accountancy, general management and consultancy require the study of Business at some point. Currently Business and Economics related subjects are amongst the most popular degree choices for Royal Russell pupils.



CHEMISTRY

INTRODUCTION

With a good foundation in Chemistry, pupils will not only understand how to balance equations and discuss moles like a professional, but also get a better understanding of how real world phenomena work.

At Royal Russell, IGCSE Chemistry, like both Biology and Physics, starts in Year 9. Chemistry is taught within the Department by a specialist subject teacher who is supported by a dedicated laboratory technician. The pupils benefit greatly from the practical nature of this subject and through teacher demonstrations, but mainly through the medium of practical class work.

IGCSE

Pupils start their IGCSE studies in Year 9; they follow the Edexcel IGCSE linear specification, with the opportunity to obtain separate IGCSEs in Biology, Chemistry and Physics.

A LEVEL

A level Chemistry is particularly important if pupils wish to follow careers in medicine, pharmacy biochemistry or veterinary sciences, to name just a few. Chemistry is a highly regarded subject by admissions tutors in many fields and not just Science related courses. This is because the subject nurtures the ability to solve problems, use logical thinking, analyse data and carry out effective research. Chemistry graduates are valuable in several types of employment and can contribute to a wide range of professions, from the industrial sector to financial companies.

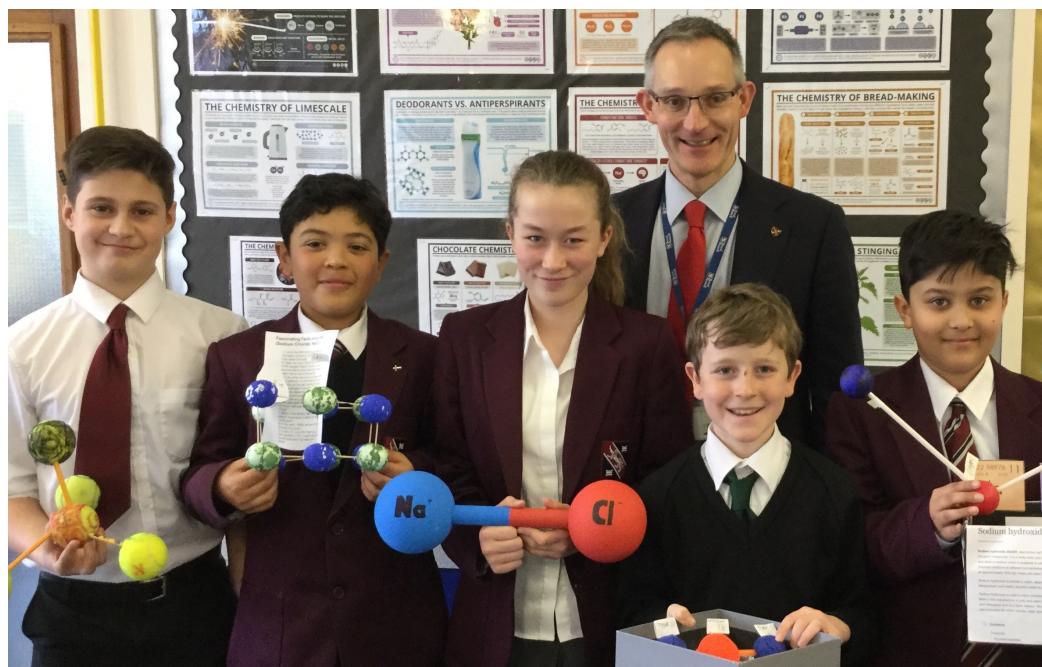
Chemistry is a popular choice at A level and our current pupils follow the AQA course. As part of their eight timetabled lessons a week, pupils follow a bespoke course which prepares them for their practical assessments throughout the year.

ENRICHMENT AND CO-CURRICULAR

The Chemistry Department organise numerous trips and activities throughout the academic year.

These include the following:

- Key Stage 3 attendance at the Salters' Festival of Chemistry
- A masterclass in Spectroscopy at Queen Mary University of London
- Chemistry Club which involves many fun and challenging events and competitions for our IGCSE pupils with the direction and support of our A level pupils
- ChemSoc where A level pupils can challenge themselves and each other with topics related to Chemistry.



COMPUTER SCIENCE

INTRODUCTION

Computers have become an integral part of our society. They can be found everywhere, from mobile phones, televisions, cars and to the future networked homes.

Computer Science focuses on the fundamental principles of the science as well as advanced techniques that are used in practical systems development.

FACILITIES

- Four air-conditioned computer rooms running Windows 10 and Office 2010 suites
- A class set of Raspberry Pi's as well as an extensive range of other programmable devices
- A range of co-curricular activities that extend pupils skills beyond the classroom
- The entire curriculum is on the school's Virtual Learning Environment, Firefly
- Supervised pupil access to ICT rooms available before and after school

FEATURES

Pupils studying at Key Stage 3 follow a curriculum developed specifically for Royal Russell, based upon the national computing curriculum and covering topics such as computational thinking and algorithms, hardware and software, data representation, networks and the internet and of course lots and lots of programming.

The course is aimed at preparing pupils not only for the GCSE but also for a world which is becoming ever more heavily reliant on a knowledge of computer systems.

Computer Science is a popular option at GCSE. Pupils follow the OCR course which is made up of three Units, two Examinations and one Practical Unit. The Practical Unit requires pupils to create their own programs to solve challenging problems.

In the Sixth Form, pupils follow the Cambridge International Examinations Computer Science course. This builds on knowledge and skills learnt at the previous Key Stage and is a demanding course.

A large proportion of the pupils following Computing A level go on to study it at university, and we have had great success in placing pupils at the university of their choice.



DESIGN AND TECHNOLOGY

INTRODUCTION

The study of Design and Technology at Royal Russell allows pupils to explore the world of design through a myriad of focused practical tasks and project work. Pupils enjoy 'hands-on' activities and there is no better way to learn than by experience! We set design briefs that not only encourage pupils to be creative but will also teach them the necessary skills to communicate their ideas to others. However, the real satisfaction comes in actually bringing their idea to life and to do this successfully pupils are taught to accurately and safely use the wide range of tools and equipment available in our two workshops. Generating, developing and manufacturing an idea into a finished product is a rewarding experience.

KEY POINTS

- Well-equipped multimedia workshops including laser cutting technology
- Dedicated Design and Technology computer room with Computer-Aided Design software
- After-school workshops for all examination groups.

OPPORTUNITIES

At both GCSE and A level, our pupils are given the opportunity to undertake a major design project of their own choice. They identify a problem and in only one academic year they must research and analyse this problem, develop a working solution and then finally manufacture a fully working prototype for testing. These projects are stimulating and challenging and pupils experience a real sense of achievement and the rewards are often considerable.



DRAMA

INTRODUCTION

The benefits of Drama cannot be under-estimated. It helps all pupils to build their personal confidence, whilst also developing their ability to speak in public and deliver presentations. Drama provides invaluable skills for working in teams and problem solving, as well as allowing those with a creative streak to fully express themselves. The Department is lively and dynamic, offering all pupils the opportunity to take part in learning vital skills both within the curriculum and as a co-curricular subject.

DRAMA IN THE CURRICULUM

Drama is taught at all Key Stages and is a popular choice at GCSE and A level and our pupils achieve excellent results. Again this year our A2 pupils achieved 100% A* to B. Pupils study a variety of plays and develop a working and theoretical knowledge of practitioners and theatre history. They create scripted and devised performances for examination; whilst the majority of our pupils choose to act, a significant number also choose the technical option and study lighting and sound. These exam pieces are performed to a largely pupil audience and we then run evening shows for parents and families to enjoy the work as well.

Many of our pupils go on to study Drama at university and Drama School; working both on stage and in a technical capacity backstage, whilst others use their experience to demonstrate an ability to interact confidently and effectively with others. Pupils are exposed to live theatre through regular trips and from companies who come in to perform in our Auditorium. Professional workshops with groups such as Frantic Assembly help to extend our pupils performance knowledge. We also go further afield and enjoyed a super trip to New York with our senior pupils to enhance their studies.

FACILITIES

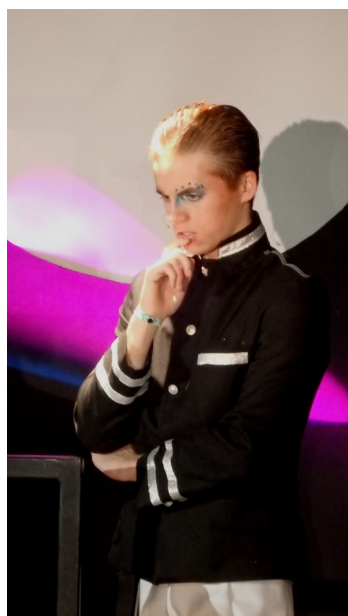
- 200 seat Auditorium
- Extensive prop and costume store
- Drama Studio
- Theatre sound and lighting technology

ENRICHMENT AND CO-CURRICULAR

Our annual productions are a popular event with pupils and parents alike. Last year's production was Return to the Forbidden Planet, with over 50 in the cast and staging on three levels. We were supported by an excellent pupil band, as well as all production teams being pupil run and led, giving another 40 pupils a key role in making the production a success. To complement Drama lessons there is an opportunity for all pupils to participate in the very popular Guildhall Trinity Acting classes after school. As well as being great fun these classes give the pupils opportunities to take graded exams either as a group or solo. Our pupils have a 100% success rate and many use these exams to enhance their UCAS applications.

There is also a Technical Club after school where pupils learn how to run the lighting and sound in the Auditorium and the Studio, they then become part of the 'Tech Team' and help support school events.

We run an annual House Drama Competition as part of the House Activities Cup, this involves pupils in Years 7 to 9 performing a devised piece from a given stimulus, assisted by senior pupils in creating and directing their piece. This prestigious competition was won for the first time in over 13 years by a boys' House, Oxford, well done boys.



ECONOMICS

INTRODUCTION

Economics is taught as an A level subject within the Business Studies Department.

Economics is an exciting and academic subject and is highly regarded by universities and employers. We explore answers to everyday questions relating to the world of finance, government and current affairs.

SKILL DEVELOPMENT

Numeracy	Understanding Economics requires a good level of numeracy in order to interpret data and graphs.
Analytical	A model pupil will need to analyse economic data, identify trends and explain these using economic theory.
Communicative	A successful economist needs to be able to think logically and write fluently when developing a line of reasoning and completing extended responses.

ENRICHMENT AND CO-CURRICULAR

The Department runs numerous activities throughout the academic year. These have included the following:

- Economic conferences with highly respected speakers in their field including George Osborne, Vince Cable, Alistair Darling, Ed Balls, Tim Harford, Hugh Pym and Stephanie Flanders
- Visits to Surrey University involving real-life simulations on how economic data impacts the Stock Market
- Attending evening lectures at the London School of Economics, listening to top economists discussing a variety of issues being faced by countries in Sub-Saharan Africa, and the challenges facing China in achieving sustainable economic growth
- Visits from development economists at the Institute of Economic Affairs
- Attending conferences at the University of Cambridge Economics Society and lectures from Bank of England economists about UK monetary policy.



ENGLISH

INTRODUCTION

The need to communicate and imagine are essential in life and the English Department aims to develop and hone these skills. Enthusiastic and highly qualified teachers encourage pupils to develop a life-long love of language and literature, while also supporting the individual needs of learners in helping them maximise their academic and social potential.

SUMMARY

The importance of developing accurate communication skills, including speaking and listening, is emphasised in lessons, but the Department also highly values creativity and the ability to imagine. A passionate team of teachers give motivational encouragement to pupils to become more ambitious readers, writers and speakers. This is achieved by using a variety of stimulus, from classic literature to modern texts, and poetry to newspaper articles.

COURSE CONTENT

The Key Stage 3 programme aims to inspire and encourage pupils to become confident communicators, enthusiastic readers and prepares them for the various challenges of Key Stage 4 and later Key Stage 5. Schemes of work focus on skills of comprehension, analysis, writing in various forms and speaking and listening.

Shakespeare and pre 20th century fiction and non-fiction is studied throughout the Key Stages and whilst GCSE and A level now feature set texts, the Department encourages individual choices and independent research and learning at every opportunity. At all stages, pupils are encouraged to read as widely as possible.

ENRICHMENT AND CO-CURRICULAR

The English Department runs reading programmes for all Key Stage 3 pupils by working closely with the Library and through lunchtime reading clubs. Trips to local theatres, conferences and other educational visits are undertaken to complement class work. Pupils are also supported via Key Stage 4 and 5 tutorial sessions and an after-school 'catch-up' group. The Department also co-ordinates the running of the School Newspaper and public speaking events.

The English department participates in the Shakespeare Schools Festival which allows all Years 7, 8 and 9 pupils the opportunity to perform an abridged Shakespeare play in a professional theatre. In addition, we run a poetry and prose festival within school to celebrate the creative writing of some of our most imaginative pupils!

Pupils in Years 10 to 13 also have the opportunity to take part in the National Theatre's 'New Views' playwriting programme, which teaches various approaches to playwriting and benefits from a professional playwright coming in to support pupils in the writing of their own 30 minute piece of drama for a national competition.



FOOD PREPARATION AND NUTRITION

INTRODUCTION

Food Preparation and Nutrition is an exciting and rewarding subject. Pupils will learn how to select a nutritious diet and achieve a healthy lifestyle in line with current government guidelines. At the same time, they will learn the skills which will enable them to make a wide range of delicious dishes. They will also acquire an understanding of food safety and hygiene, how to prepare, cook and present dishes and these are valuable lessons which they will use throughout their lives.

KEY POINTS

Key Stage 3	All pupils study Food Preparation and Nutrition. Pupils learn a wide range of practical and organisational skills enabling them to produce high-quality food products which meet nutritional targets and promote good health. House competitions are organised throughout the year.
Key Stage 4	Pupils have the opportunity to study Food Preparation and Nutrition at GCSE. Coursework includes 2 extended practical tasks and accounts for 50% of the total examination mark with the other 50% being in the form of a written examination.

FACILITIES

The Food Preparation and Nutrition Department boasts:

- A theory room available for practice demonstrations with networked computers for all pupils to research and produce coursework
- A conveyor oven that facilitates the use of Computer-Aided Machinery as used in the food industry
- An outstanding library of recipe and research books
- A practical room with a demonstration bench and individual work stations, fully stocked with utensils and a selection of contemporary gadgets necessary for a wide range of culinary activities
- House competitions including the Edible Christmas Decoration
- Excursions including one to the Hilton London Docklands
- Twice-weekly cooking clubs after school
- Whole school competitions such as The Great Royal Russell Bake Off and MasterChef Challenge.



GEOGRAPHY

INTRODUCTION

Geography is taught in a modern, dynamic, forward-thinking way at Royal Russell in three specialist rooms with outstanding resources.

We combine the best of both classroom and fieldwork techniques to broaden knowledge.

KEY POINTS

Geography offers:

- Understanding of physical processes
- Team building through fieldwork
- Discursive and practical skills
- Sense of global awareness
- Ability to develop creative thinking
- An understanding of our environmental impact

Geography is compulsory for Years 7 to 9 and many study at GCSE and A level.

At Key Stage 3 pupils follow a range of topics including:

Year 7	Enquiry Skills	Map Skills	Coasts	Africa	Young Geographer of the Year Competition
Year 8	Measuring Development	Tectonics	Ecosystems	China	
Year 9	Global Issues	Global Issues	GCSE UK Landscapes	GCSE UK Landscapes	GCSE UK Landscapes

For the new GCSE Geography specification, we will follow Edexcel A syllabus. This has 3 units, Physical Geography, Human Geography and Global Issues and Skills. This involves 2 fieldwork trips during Years 10 and 11.

For the new A level specification, the Geography Department is following the Eduqas (WJEC) specification. The A level covers a range of topics including environments, global oceans, plate tectonics, migration issues and place. There is a large fieldwork requirement and an individual study which pupils must complete by the end of the second year.

The Department places great importance on fieldwork and includes a fieldwork based assessment in all year groups. Recent trips include visits to Lanzarote, Iceland, USA and Sicily as well as local visits to Cornwall, Wales and London.



GEOLOGY

INTRODUCTION

Geology is a popular A level subject at Royal Russell. Although it is a science it is not mathematical, and it therefore can go with almost any combination of other subjects. There are good links with Physics, Chemistry, Biology and Geography. Having studied the subject at A level, a large number of Russellians have continued with the subject at university.

In Year 12 we lay the foundations. We look at how the planet formed, what is deep inside and how the crust keeps moving and changing. We also study in detail the processes which form all the rocks that we live on and how life has developed here on earth.

In Year 13 we investigate economic geology - the areas where there are job possibilities. This involves the search for valuable materials and how geologists can help in engineering and avoiding hazards!

There are no essays to write in Geology. The examinations are largely structured questions aimed at finding out pupils' level of understanding. There are some coursework aspects which are supported by our annual field trip. In addition we encourage visits to the Geological Society in London and the Natural History Museum (have you seen the new Stegosaur?).



HISTORY

INTRODUCTION

The History Department aims to both educate and enthuse.

In Year 7, pupils learn about the Norman Conquest and its impact. They finish the year with a project on the Black Death worth 25% of their year end mark. The aim is to prepare pupils for the demands of coursework higher up the school, and to encourage them to learn independently. Pupils also complete a project at the end of Years 8 and 9 on Slavery and US Civil Rights respectively. The Year 8 pupils study the Tudors and Stuarts whilst the Year 9 pupils follow a course on 20th Century history covering women's right to vote, both World Wars and Nazi Germany.

At GCSE pupils are taught the Edexcel syllabus, which covers Weimar and Nazi Germany, Superpower Relations 1941-1991, Elizabethan England and a thematic study of Crime and Punishment c1000-present.

At A level, pupils are taught British, European and World History. Topics include Searching for Rights and Freedoms in the 20th Century focusing on 'In Search for the American Dream: USA 1917-1996' and Africa, 1948-94: from apartheid state to 'rainbow nation'. They also study the British Empire and research coursework on the Russian Revolution.

Years 7 to 11 are taught in a traditional classroom environment where each room is equipped with an interactive whiteboard, enabling staff to use technology to ensure that a variety of teaching techniques can be employed. Years 12 and 13 are taught in an intimate library setting. This creates an atmosphere similar to that of a university seminar. This helps to create discussion and debate which are crucial to the pupils at A level.

Year 9 pupils commemorate Holocaust Memorial Day with a cross-curricular day including lessons from other subjects such as English, Politics, Psychology and Geography and culminates with a talk from a Holocaust survivor. We have been privileged to have heard Eva Schloss, Rudi Oppenheimer and Joan Salter share their experiences.

ENRICHMENT AND CO-CURRICULAR

It is important that not all learning takes place in the classroom. Pupils need to experience History first-hand in order to fully appreciate and understand it. In Year 7, pupils complete their year with a trip to Rochester Castle and Cathedral. In Year 9, pupils have an option to take a residential trip to Belgium in order to see the battlefields and cemeteries of the First World War.

GCSE pupils have the opportunity to visit Munich, Nuremburg and Berlin and last year A level pupils travelled to Washington DC and New York. Sixth Form pupils are also given the opportunity to attend historical conferences led by eminent historians. We have attended one on Civil Rights in the US, one on Russian History at Cambridge University and one on German History at UCL.

Our History Society continues to grow and we hold half-termly meetings to discuss key historical issues. Topics covered have been on the value of counter-factual history, the use of literature in history and the accuracy and utility of historical films. Historical Society outings have included cinema trips to watch '*Suffragette*' and '*Viceroy's House*' and a trip to hear David Starkey speak on the Tudors.



MATHEMATICS

INTRODUCTION

We aim to ensure that all of our pupils are given the opportunity to reach their full potential from the start of Year 7. The Department benefits from a team of ten experienced teachers, sensitive to the needs of all pupils.

The Mathematics curriculum for Years 7 to 11 covers number, algebra, geometry, statistics and probability.

In Year 7, pupils are banded by ability with a common scheme of work and assessments. Full setting is from Year 8 onwards and regular assessments throughout the year allow us to change a pupil's set where this is appropriate.

Our most able pupils are stretched through a variety of internal and external Maths Challenge competitions and masterclasses, as well as an accelerated pace of work in our top sets.

There is a network of support for pupils who need extra help in the form of a weekly support class in Year 7, a weekly drop in clinic for all year groups and in-lesson support for some classes.

GCSE AND A LEVEL

The Department has an excellent track record in achieving the highest results at both GCSE and A level leading to pupils taking degrees in mathematics, engineering, actuarial science and economics.

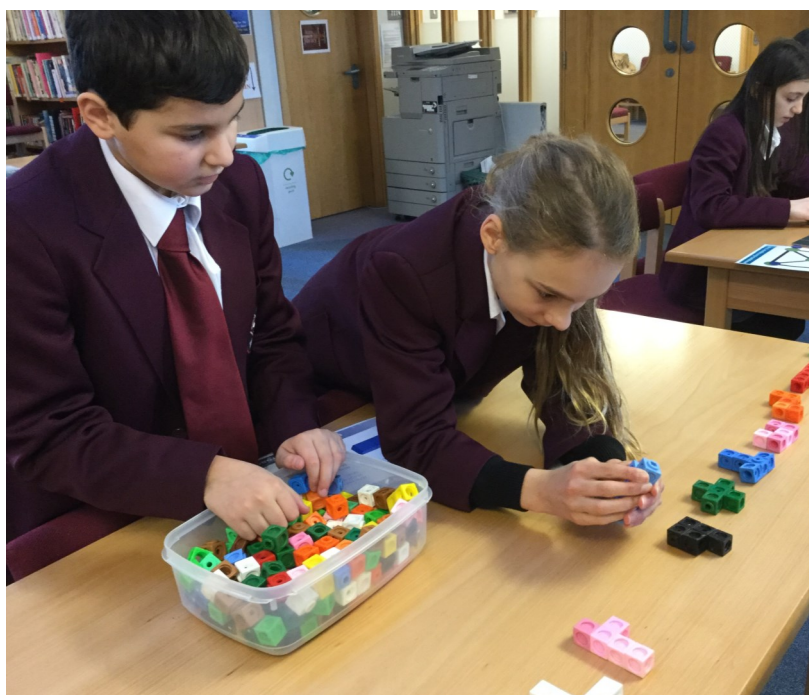
We currently have one hundred pupils studying A level Mathematics including twenty Further Mathematicians. At A level, pupils study Pure Maths, Statistics and Mechanics.

We offer a range of support to pupils, including weekly GCSE revision classes, a weekly A level Maths Clinic, and holiday revision classes. For pupils applying to top Russell Group universities requiring them to take specialist maths papers, we offer individual one-to-one support.

We offer our strongest pupils the opportunity to take part in national mathematics competitions with notable successes, as well as annual enrichment maths study days at the University of London.



The Cambridge University Roadshow is a very popular event offering practical hands-on problem solving tasks for individuals and teams



MEDIA STUDIES

INTRODUCTION

Media Studies is a hugely popular and successful subject at A level within Royal Russell School. Over 90% of our A level pupils achieved an A* to B grade in 2016. As a result of this success we are launching a GCSE in 2017.

Both courses involve a mixture of theory and practical work. All our pupils learn how to produce music videos, film trailers and adverts using a range of technologies.

During the course, pupils learn how to analyse films, advertisements, newspapers, magazines, advertising campaigns and television programmes.

KEY POINTS

- On completing the course, pupils have progressed to top universities such as University College London, Warwick, St Andrew's and Central St Martin's, as well as the best Film and TV production course in the UK, at Westminster
- Pupils can participate in a range of exciting co-curricular activities, including a GCSE film making club, MUN TV and other major live projects
- Our pupils excel in Media Studies, Ryan, Alisiya and William were shortlisted for British Film Industry pupil film-making competitions whilst Louie's short film was screened at US film festivals.

THE FUTURE

Media Studies can be the first step in a wide variety of careers in the broadcast, print or new media industries. Whether pupils want to be a journalist or web designer, a scriptwriter or to work in advertising, this course develops the necessary skills, knowledge and understanding.



MODERN FOREIGN LANGUAGES

INTRODUCTION

French and Spanish are the two core languages taught at Royal Russell from Year 7 onwards and German is taught in Year 9 for the newcomers' set as well as pupils who have never studied Spanish. All three languages are studied at GCSE and A level.

The teaching is largely communicative, aiming at both enjoyment and a high degree of oral and written competence. All pupils are required to take at least one Modern Language to GCSE level, but good linguists keep both. Pupils who are extremely advanced in the language have the opportunity to take the examination early and one-to-one sessions take place with the language assistants.

REGULAR TRIPS AND ACTIVITIES

- French and Spanish plays to Years 7 to 10
- Day trip to Boulogne for Year 7 pupils
- Year 7 residential trip to Paris, France
- Year 8 residential trip to Bilbao, Spain
- Year 9 to 11 French Exchange to Orléans, Cours St Charles School
- Sixth Form French Exchange to Orléans
- Spanish Exchange for Years 8 to 10 with a school in Zaragoza.

DEPARTMENTAL FEATURES

- One-to-one sessions with French or Spanish assistants for A level and early GCSE
- Twenty-four station multimedia digital language laboratory
- Subscription to current affairs magazines in multiple languages in the Library
- Small classes and ability sets
- Early GCSE possible and offered
- Early A level for high achievers
- IGCSE French and Spanish for all pupils
- Mandarin lessons available after school.



MUSIC

INTRODUCTION

Music is a high profile practical subject in the School. Over 250 pupils receive individual weekly instrumental tuition from a team of top professional musicians, and Music is taught throughout the School with options at GCSE and A level.

KEY POINTS

- Four outstanding choirs including Barbershop for boys' voices
- Swing band, jazz band, orchestra and other small ensembles, who perform regularly in school and beyond
- Annual international tours including, most recently, Gibraltar, Norway, South West France, Costa Brava, Germany, Menorca and Paris
- Collaborations with the Drama Department for large scale musical productions
- Regular performances in Chapel and concerts, featuring the four combined choirs
- First class team of visiting professional musicians
- Over 200 successes per year in Associated Board Music Examinations
- An annual Royal Russell School Young Musician of the Year competition.

DEPARTMENTAL FEATURES

With regular performances at school and beyond, the Department has gained a local, national and international reputation for musical excellence. Recent venues for performances have included the Royal Albert Hall, Southwark Cathedral in London, Barcelona Cathedral, Chartres Cathedral and Euro Disney. The Chamber Choir is the elite group of singers in the school who have performed concerts at local venues, and who have toured Menorca and Gibraltar.

The Department consists of state of the art technology equipment, including 24 Apple Mac computers and a recording studio. There are regular opportunities to attend concerts, plays and operas outside the school, enabling pupils to widen their musical horizons. We are a non-elitist department, encouraging music making of any standard or genre as much as possible.



PERSONAL, SOCIAL, HEALTH AND ECONOMIC EDUCATION

INTRODUCTION

The PSHEE Department coordinates and supports the development of personal, health and citizenship education for Years 7 to 13. By supporting the emotional and social development of our pupils we aim to build their self-esteem. This enables them to participate confidently in lessons and activities, promote their emotional health and well-being and equips them with the knowledge and skills to manage their feelings, as well as make healthy positive decisions.

PSHEE is delivered through a combination of timetabled PSHEE lessons, as well as additional integrated sessions within other subjects and in Tutorial time.

In Years 7 and 8, PSHEE explores pupils' rights as well as their responsibilities towards others, and in Years 9 and 10, pupils explore the nature of relationships, the law as it affects young people, as well as social and health issues such as sexual health, drugs and alcohol education.

In Year 11, there are additional PSHEE provisions within the Study Skills programme where issues including drug education and sexual health are revisited. In the Sixth Form, pupils benefit from a range of specialist guest speakers who provide talks on age appropriate topics.

COURSE CONTENT

The PSHEE curriculum follows national guidelines for Key Stages 3 and 4 and covers personal and economic well-being and financial capability.

PSHEE makes a significant contribution to pupils' personal development alongside the contribution of all other subjects and curriculum experiences.

'All pupils benefit from a highly effective programme of Personal, Social, Health and Economic Education (PSHEE)' - ISI Inspection Report.



PHOTOGRAPHY

INTRODUCTION

Photography is offered as an Art and Design A level endorsement.

Through themes such as portraiture, landscape, still life and documentary, pupils will have the opportunity to develop personal responses creating work using a range of photographic media, techniques and processes. Pupils are taught both traditional and new technologies building up a portfolio of artwork.

Pupils will be assessed through the four assessment objectives which have equal weighting.

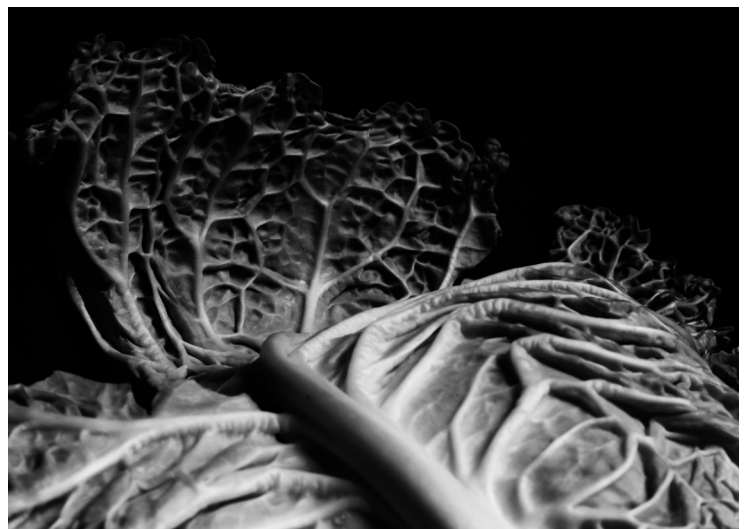
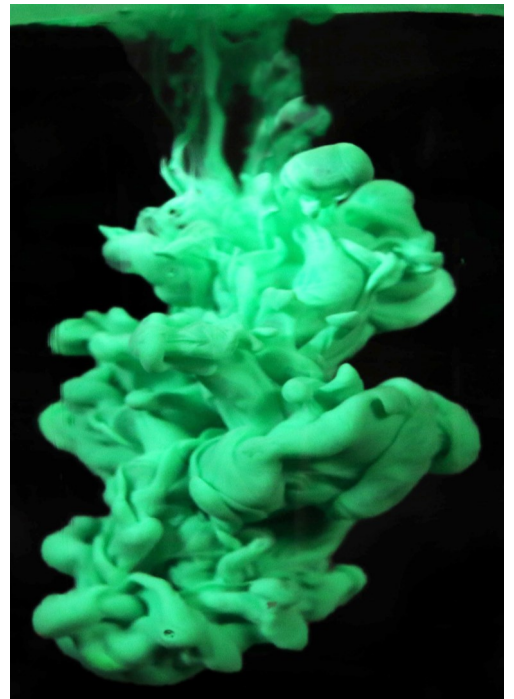
COURSE CONTENT

We have skilled and highly trained staff and good facilities for delivering the subject successfully.

The course is very exciting, allowing pupils the opportunities to:

- Explore elements of visual language, line, form, colour, pattern and texture in the context of photography
- Respond to an issue, theme, concept or idea
- Discover appreciation of viewpoint, composition, depth of field and other photographic techniques
- Be able to discern appropriate use of camera, film, lenses, filters and lighting.

During the course, pupils are exposed to how ideas, feelings and meanings can be conveyed using photography, the historical and contemporary development and different styles and genres.



PHYSICS

INTRODUCTION

The fundamentals of Physics are the building block on which the world functions. As a subject it can inspire awe in the world around, explain the phenomena we see every day and for some, provide an amazing career in one of a huge number of possible fields.

The Physics Department at Royal Russell is composed of specialist teachers who love to share their enthusiasm and passion for the subject and a dedicated full-time laboratory technician.

Physics as a separate subject starts in Year 9, with Physics topics making up part of the Years 7 and 8 science curriculum. We are a well-resourced department with a wide-range of practical equipment.

IGCSE

All pupils study Physics from Years 9 to 11. Most pupils will follow the Edexcel IGCSE and will be entered as a triple candidate (receiving 3 separate qualifications for each of the three sciences) or a double candidate (receiving 2 qualifications from combining the exam results from all three sciences).

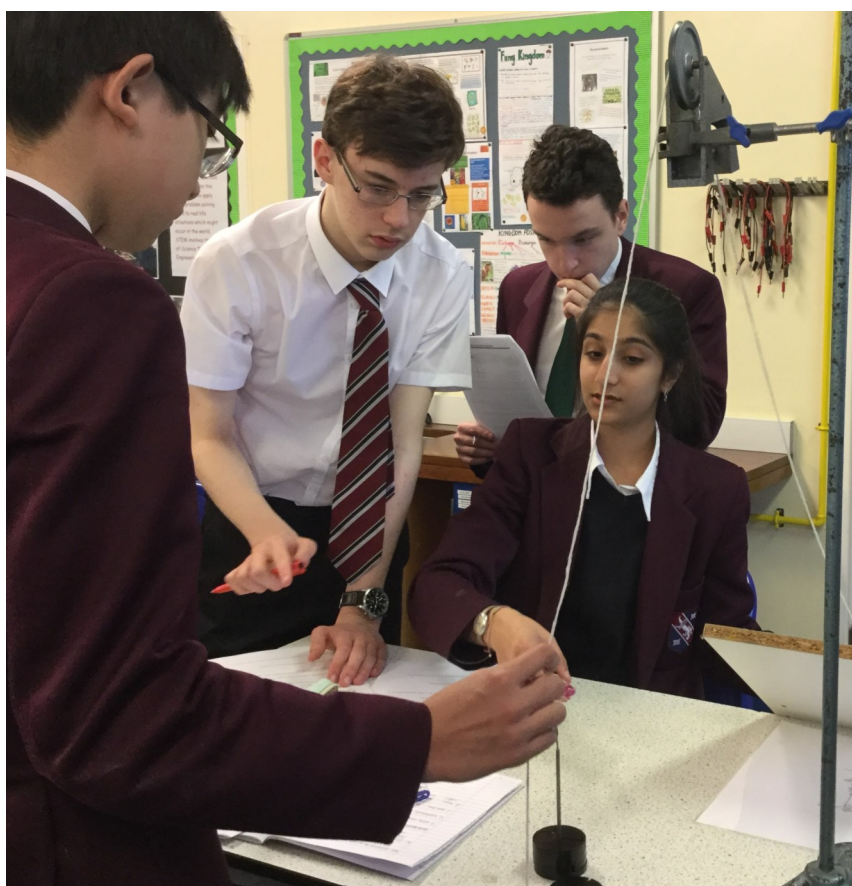
A LEVEL

Physics is not only a fascinating subject, but is an excellent vehicle for developing a wide range of skills including problem solving, mathematical manipulation, research and independent working. Both the material and the skill set are incredibly valuable for a large number of areas which pupils may go on to study or work in.

A level pupils at Royal Russell will follow the Edexcel linear course. The course covers topics from the full spectrum of Physics and is designed to develop pupils as both theoretical physicists and as practical physicists.

ENRICHMENT AND CO-CURRICULAR

As well as being able to study Physics at IGCSE or A level, pupils can also join the STEM or the Problem Solving Challenge Club. It is a fantastic opportunity to apply thinking skills to new situations and conduct experiments into finding a solution to a given problem. Pupils may also get to take part in the annual inter-school problem solving competition, competing in groups of six against pupils from other local schools. The Department also organises a number of different trips and stand-alone activities throughout the year including CERN for Sixth Form, The Big Bang Science Fair and lectures at major universities.



POLITICS

INTRODUCTION

Politics appeals especially to those pupils interested in current affairs and those who enjoy debating.

KEY POINTS

- Small class sizes - allowing for plenty of discussion
- Regular conference visits - pupils hear politicians and academics
- Many pupils go on to study a Politics related course at university such as Law or International Relations.

DEPARTMENTAL FEATURES

A wide variety of teaching methods are used in the lessons which include group work, internet research, pupil presentations, role play and whole class discussions. Pupils also run mock elections.

The new Politics A level course compares the reading of British political life with the theory of Government. Pupils will have the opportunity to study the three main ideologies: socialism, liberalism and conservatism.

In Year 13, pupils will follow a Global Politics course concentrating on the role of the main States and International bodies, whilst focusing on current major newsworthy issues such as global warming, international terrorism and human rights. The different views on Feminism will also be studied.



SCIENCE

INTRODUCTION

Science is one of the many strengths of the School. It is taught by enthusiastic and experienced teachers who are all experts in their field.

Studying Science helps us to better understand the world around us. Science relies on testing ideas with evidence gathered from the natural world. Millions of scientists all over the world are working to solve the problems facing our future such as how to develop sustainable energy sources and developing cures for chronic illnesses.

Pupils study using a variety of techniques and practical aids, such as microscopes and telescopes, and conduct experiments to test their theories.

TEACHING ARRANGEMENTS

Years 7 and 8	Five periods of science are taught over a period of a week. These lessons cover the syllabus in all three sciences.
Year 9	Two periods of each individual science are taught by subject specialist teachers totalling six periods.
Years 10 and 11	Pupils receive three periods of each individual Science. Pupils continue to be taught by specialist teachers and at the end of Year 11 sit examinations which lead to Edexcel IGCSE Double Award Science or IGCSE in Biology, Chemistry and Physics.
Years 12 and 13	A level Biology, Chemistry and Physics are available for our Sixth Formers who select the individual science subjects.

FACILITIES, ENRICHMENT AND CO-CURRICULAR

There are seven well-equipped laboratories supported by full time technicians. Eleven teachers in total teach in the Science Department including the Headmaster who teaches Physics.

The Science Department organises and runs a Problem Solving Club (STEM Club), Chemistry Club and Junior Science Club. In the past year, pupils studying Biology have enjoyed a residential trip to Slapton in Devon and Chemists have taken part in the Salters' Festival Day. Sixth Form pupils recently visited the CERN particle accelerator near Geneva.



SPORT

INTRODUCTION

The huge advantage of our Junior and Senior school sharing the same site, coupled with the size of each year group, enables us to monitor the progress of every pupil. This ensures we get the very best out of our pupils at all ages and levels.

A clear vision for sport, alongside a carefully designed long-term athlete development model, ensures a smooth transition and unique continuity from Year 3 to 13.

We expect all our pupils to enjoy their sport and to leave physically fulfilled, having reached the very limit of their potential.

Through our highly qualified teachers and specialist coaches we are able to identify those pupils displaying sporting talent and provide tailor-made development programmes for teams and individuals. Our Scholarship programme helps recruit outstanding athletes and support their sporting aspirations.

We continue to invest heavily in sport and our exceptional on-site facilities include four full size and four junior size grass football pitches, a new national standard floodlit hockey pitch and two further new floodlit all-weather games areas for Netball and Tennis. We also have a large well equipped sports hall, a gymnasium, a 25 metre indoor swimming pool and a separate teaching pool. A challenging cross-country course winds its way through our extensive grounds.

The School has full planning permission to build a floodlit 4G football AstroTurf. With further exciting projects in the near future and a growing reputation, sport at Royal Russell offers exceptional opportunities for all our pupils.

CURRICULUM

Curriculum Sport is divided into two categories, morning Physical Education lessons and afternoon Games sessions. PE lessons are aimed at ensuring pupils experience a variety of as many sports as possible. This gives them the basic technical skills and they gain the understanding of fitness and health, through fitness testing. By applying all the principles of physical fitness ensures that a pupil will know how to improve any specific type of fitness. Games afternoons are aimed at the mass participation sports including Football, Netball, Hockey, Tennis, Cricket, Rounders and Athletics. This gives the opportunity for a pupil to learn, excel and enjoy a high quality programme of the sports on offer as part of a team. Academically the School offers a successful GCSE PE programme at Key Stage 4 and offers an exciting and practical Cambridge Technical Diploma in Sport and Exercise Science at Key Stage 5.

ENRICHMENT AND CO-CURRICULAR

Our full programme of fixtures includes competitive matches against many local schools and we also enter teams and individuals in county, regional and national competitions. The School offers many tours in a variety of sports with more recent exciting ventures heading to La Manga for Netball, Madrid for Football and Utah for Skiing. The School offers an extensive co-curricular club programme for sport, to ensure all pupils find a sport they can enjoy now and in later life.



THEOLOGY AND PHILOSOPHY

INTRODUCTION

Theology - the study of belief about God - and Philosophy - enquiring about the meaning of life - have traditionally been subjects of fundamental importance.

In lessons there are opportunities to learn about, understand and reflect upon a variety of both religious and non-religious beliefs, values and traditions.

Pupils will:

- Consider philosophical questions about the meaning and purpose of human existence
- Learn how to make well-reasoned, sensitive judgements about a variety of religious and moral issues
- Explore beliefs and practices within the major world faiths and philosophies that they may encounter as adult citizens in a diverse world today.

COURSE CONTENT

The courses are suitable for all pupils, whatever their beliefs.

Highly experienced members of staff, including two subject specialists, deliver the subject curriculum. Years 7, 8 and 9 have two lessons a week learning of the three great Abrahamic religions - Judaism, Christianity and Islam. They will consider the lives of saints and heroes of faith. They examine topics such as Miracles, Creation and the Environment, Evidence for God's existence, and Forgiveness.

Those who choose GCSE Religious Studies will study a wide range of topics including Christianity, Islam, relationships and families, the existence of God and peace and conflict.

The A level syllabus involves a study of Philosophy of Religion, Religion and Ethics and Christianity.

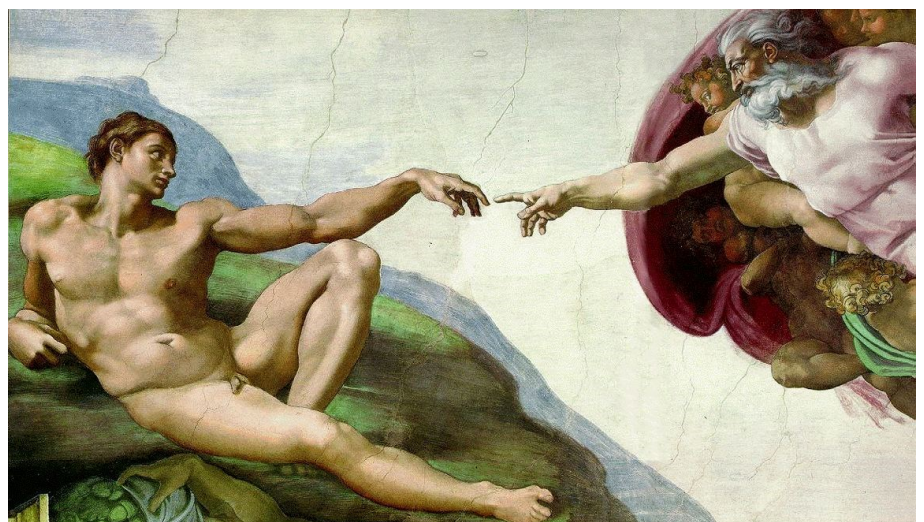
ENRICHMENT AND CO-CURRICULAR

The Department organises regular lunchtime Faith Debates, Explore Christianity, and a Philosophy Club, all of which are popular and provide an opportunity for participants to hone their debating skills. Additionally, our pupils have led Café Philo meetings at the French Institute in Kensington. This is an open debating forum where they are required to present their views on a philosophical problem of their own choosing and then defend those views from questions and criticisms posed by an adult audience of philosophy enthusiasts.

Groups are taken to suitable lectures in London and elsewhere. There are visits to St Paul's Cathedral, Westminster Abbey and the National Gallery to see sacred art, and to churches, a synagogue and a mosque.



A. Rublev's *Trinity* and Michelangelo's *The Creation of Adam*



PASTORAL CARE AND HOUSE SYSTEM

Royal Russell prides itself on giving bespoke pastoral care to all pupils and on supporting their family ties. We encourage an ethos of respect for oneself as well as for others in a supportive, caring and inclusive community.

Pastoral care begins with an underlying ethos of consideration and kindness and is promoted when our staff work collaboratively for the good of the pupils.

Our ethos supports pupils' personal, social and emotional development and a culture of encouraging good behaviour and taking on responsibility. Pupils then develop self-confidence, learn to keep things in perspective and grow to be resilient.

All pupils are members of one of nine Houses and these are run by an experienced and sympathetic Housemaster or mistress, and a Deputy, alongside the Tutor team. All Houses have prefects - senior pupils whose role is primarily pastoral - there is an onsite Medical Centre to deal with any health problems and a School Counsellor to whom pupils may turn if they wish. At the heart of the school is the Chapel which provides the moral and spiritual cradle for the whole community, regardless of religious affiliation.

Our Tutoring System also plays an integral part in the day to day life of staff and pupils. In addition to being members of a House, all pupils have a Tutor who is responsible for their academic and social well-being. We pride ourselves on how our staff set out to develop firm, meaningful, nurturing relationships, which enhance pupil's progress in all areas.

Each pupil is an individual, as well as part of a House. Each needs an individual approach, which can only be developed through open channels of communication and time spent getting to know one another. Through the regular email and telephone conversations between school and home and the informal chats at school events, we aim to establish warm friendly relationships with parents. This helps us to understand their child and certainly helps us to deal more effectively with difficulties should they arise.

Our recent Independent School Inspectorate (ISI) inspection reported *'At all ages, pupils' spiritual, moral, social and cultural development is excellent, they are self-aware, confident, tolerant and respectful. Relationships throughout the school are excellent.'*



CAREERS EDUCATION

In addition to providing an overview of the range of careers and courses available to young people, the Careers Department offers support and guidance to pupils selecting their GCSE and A level options in order to maximise their future opportunities. Careers is taught as a curriculum subject in Years 10 and 12, and is also an integral part of the PSHEE and Study Skills programme in Years 9 and 11. Our Head of Careers is a registered member of the Career Development Institute.

'At appropriate stages all pupils receive excellent guidance about Higher Education and comprehensive information about possible future careers.' ISI Inspection Report.

The curriculum is divided into three strands:

Career Exploration	<p>Pupils will learn how to research effectively and identify appropriate university courses that will lead to the career of their choice. They will identify which additional activities, work experience, reading material and test preparation is required, as well as an understanding of the job application process.</p> <p>Pupils will gain a better understanding of the wide range of opportunities available to them and keep up to date with employment trends.</p> <p>During the Careers Project and Presentation Task in Years 9 and 10, pupils are able to demonstrate their aspiration for a particular career and the goals they have set themselves in order to achieve this. The Careers Fair in Year 10, a wide range of guest speakers and our work experience programme for Years 11 and 12 give pupils additional opportunities for future career planning.</p>
Self-Development	<p>We empower pupils to plan and manage their own careers, identifying their strengths and weaknesses and to recognise the skills and qualifications they will need to develop. We encourage pupils to raise their aspirations and provide regular support and guidance.</p>
Career Management	<p>We ensure that pupils are prepared for their A level choices and have a development plan in place for the future. This includes choosing appropriate subjects and planning work experience. Externally verified Careers diagnostic assessments are set in Years 10 and 12 to support their decision making process.</p>

The Careers Library offers a wealth of resources from university prospectuses and degree subject guides to colourful careers brochures and networked computers with specialist careers programmes. The Library is open from 8:30am until 5:30pm every day and all pupils, parents and staff are welcome to utilise the available materials.



HIGH ACHIEVERS

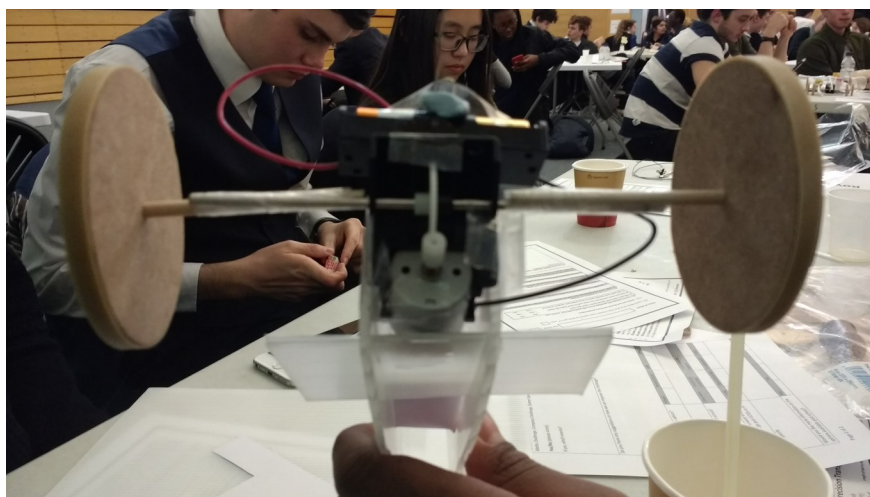
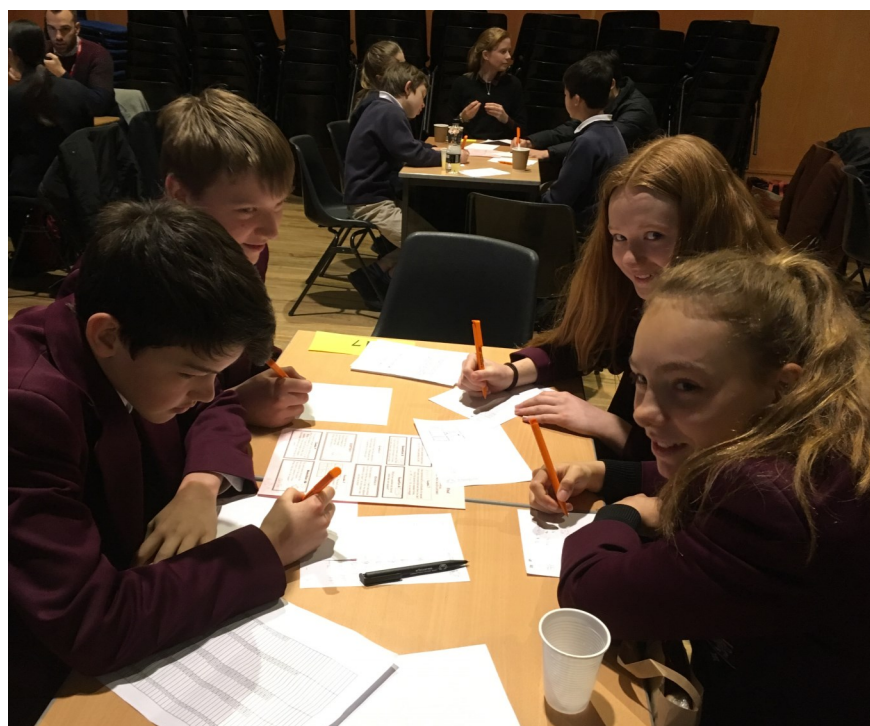
At Royal Russell we aim to stretch our high achievers in all subjects and in all lessons. This is achieved in a number of ways, through the nature of the tasks we set, the quality of questioning and the types of extension work available. Setting in Maths, Science and Languages also ensures that our pupils are challenged to reach their potential.

We run a full range of subject-based enrichment activities which are particularly attractive to our most able pupils, including History conferences at Cambridge University, Mathematics challenges and Science problem solving competitions.

We also offer a range of general co-curricular activities making the most of the talents of our high achievers, including Model United Nations (MUN) for the development of public speaking, critical thinking and communication skills, and the Combined Cadet Force for the development of leadership skills.

Our High Achievers Programme for pupils in Years 7 to 11 includes Thinking Skills and Public Speaking days, Philosophy courses, Linguistics Olympiad competition preparation as well as opportunities for pupils in Years 9 and 10 to attend lectures within the Sixth Form Enrichment programme. In Year 12 we run a bespoke programme focusing on wider curricular enrichment as well as Oxbridge preparation.

The School carefully monitors the academic performance of the most able pupils relative to expectations. This also includes provision for our ablest pupils to meet individually with members of the Senior Management Team to review progress and discuss their individual action plans.



COMBINED CADET FORCE

INTRODUCTION

The Combined Cadet Force (CCF) is a voluntary school activity open to all pupils in Year 9 and above.

The CCF has been an integral part of life at Royal Russell since its earliest days and remains one of the School's most significant co-curricular activities.

The aim of the CCF is to offer girls and boys physical and mental challenges, combined with a sense of fun and adventure in a safe and disciplined environment. Above all, the ultimate aim is to help them to develop self-reliance, confidence and leadership and to fulfil their full potential outside the classroom.

Run alongside military lines - it aims to teach practical and leadership skills which are not covered within other subjects at school.

Army and Royal Air Force sections organise specific training relative to the Cadets' choice.

Training within the CCF is organised and run by members of staff, the Officers, and cadet NCOs (Non Commissioned Officers) who are pupils in Years 12 and 13. Within the initial training, pupils will be taught practical skills such as First Aid, Self-Reliance, Map and Compass Skills, as well as an understanding of the military structure. The nature of certain aspects of the training necessitates that it is carried out away from school and pupils have the opportunity to go on camps, courses and expeditions throughout the year.

By joining the CCF, cadets also have the opportunity to get involved with volunteer and charitable work in the community and to gain nationally recognised qualifications such as the BTEC and Duke of Edinburgh's award. Much of the training that is provided within the CCF meets the requirements of the Duke of Edinburgh Award.

BENEFITS

The unique way in which the training is organised within the CCF allows for younger pupils to work alongside senior pupils within the School. The scheme has an emphasis on commitment, responsibility and teamwork. Also, the physical nature of some of the activities helps to develop higher levels of fitness whilst allowing pupils to do something that they will never have experienced before and may never get the chance to do again.

Most find that by the end of their time with the CCF they have many fond memories and shared experiences that remain with them for the rest of their lives, together with many life skills. These activities are invaluable experiences that will demonstrate pupil motivation and persistence for future CV and UCAS applications.



DUKE OF EDINBURGH'S AWARD SCHEME

INTRODUCTION

The Duke of Edinburgh Award Scheme is a leading youth charity and gives all young people the chance to develop skills for work and life, fulfil their potential and have a brighter future. At Royal Russell, pupils from the age of 13 are presented with a challenging programme of activities to stimulate their enthusiasm. Entry to the Scheme is voluntary and non-competitive and individuals are assessed on their own progress.

LEVELS OF AWARD

There are three separate awards:

- Bronze
- Silver
- Gold

Voluntary	To encourage service to others. This can include working in the school and local community.
Expeditions	To encourage a spirit of adventure. This will involve camping out and will help develop their independence.
Skills	To encourage discovery and development of personal interest and practical skills. Activities include; learning a language, cooking and help in the development of the school newspaper.
Physical	To encourage participation in physical recreation and improvement of performance.

AWARD PRESENTATION

All participants are presented with certificates upon the completion of the relevant award, and those completing Gold will receive their certificates at St James' Palace.



MODEL UNITED NATIONS

INTRODUCTION

Royal Russell School has been active in organising and participating in Model United Nations (MUN) conferences for over thirty years. Our annual conference is the oldest and longest standing in the UK. Model United Nations is more about developing communication skills than it is about the United Nations as an organisation. Although the UN forms the basic framework, MUN gives pupils the opportunity to talk, listen to and sometimes persuade people from other schools to accept their views.

Pupils take part in debating, public speaking and developing leadership skills. MUN meetings are fully pupil led in that they are run totally by pupils for pupils. Meetings are chaired by pupils, conference decisions are made by the Secretary General, Presidents and Vice Presidents who are all pupils. At conferences the members of the media, press and secretariat are all pupils.

ROYAL RUSSELL INTERNATIONAL MUN

Royal Russell hosts an International MUN conference for four days every October during the half term break with:

- Six hundred pupils from within the UK and around the world
- Over one hundred Royal Russell pupils involved, either organising or taking part as delegates
- One hundred countries represented
- Opening speeches from each delegation
- Eleven committees debate including a Security Council and ICJ
- General Assembly Meetings of four hundred delegates chaired by Royal Russell pupils.

ROYAL RUSSELL INTERNATIONAL MUN PUPILS

As well as attending our own conference, Royal Russell pupils also take part in a number of other conferences each year. Last year pupils attended nine conferences including those at Haileybury School, St Andrew's School in Dublin and the THIMUN conference in The Hague. Our pupils have developed a reputation as some of the best and most constructive delegates in the country!

Many of our pupils have won both individual and team awards over the years at different conferences. To prepare for the conferences, pupils meet voluntarily every Monday after school to practise debating and to research topics. All pupils in Year 9 upwards are welcome.

MINI MUN

Mini MUN is a voluntary after school debating club for pupils in Years 6, 7 and 8, meeting every Wednesday evening in the Autumn and Spring terms to debate motions. Pupils choose a country to represent and either support or try to amend the motion according to the views of their country. Senior MUN pupils chair the debates.



CO-CURRICULAR PROGRAMME

We encourage a healthy balance of academic rigour and co-curricular participation. Activities are run outside of the school timetable and vary term by term. Below is an example of clubs and activities run each week.

MONDAY

Morning Prayer	7.55am
Music Practice Suite Open	8:00am onwards
Library (closed during morning break)	8:30am - 5:25pm
Music Practice Suite Open	12:40 - 1:40pm
Choristers' Rehearsal	1:05 - 1:40pm
ICT Club	1:10 - 1:40pm
Theology and Philosophy Club	1:15 - 1:45pm
Music Practice Suite Open	3:50 - 6:30pm
MUN (Years 9,10,11,12 & 13)	4:00 - 5:00pm
Music Technology (by arrangement)	4:00 - 5:15pm
Design and Technology Club (Years 10,11,12 & 13)	4:00 - 5:30pm
Football Senior Squads (West Pitch)	4:00 - 5:30pm
Table Tennis Squad Training (Junior School Gym)	4:00 - 5:30pm
GCSE Drama	4:00 - 6:00pm
Orchestra	4:10 - 5:00pm
Netball Training/Fixtures (Years 7, 8, 9 & 10 – Netball Courts)	4:10 - 5:20pm
Duke of Edinburgh	5:15 - 6:15pm
Basketball (Gymnasium)	5:30 - 7:00pm
CCF	7:00 - 9:00pm
Choral Society	7:30 - 9:00pm

TUESDAY

Senior Swimming Squad	7:40 - 8:10am
Morning Prayer	7.55am
Music Practice Suite Open	8:00am onwards
Library	8:30am - 5:25pm
Music Practice Suite Open	12:40 - 1:40pm
Drama Drop-In	1:00 - 1:30pm
Music Theory Club Grades 6 - 8	1:05 - 1:45pm
Explore Christianity	1:10 - 1:40pm
Music Practice Suite Open	3:50 - 6:30pm
Touch Typing	4:00 - 4:30pm
Reading Club	4:00 - 5:00pm
Art Club	4:00 - 5:00pm
Design and Technology Club (Years 10, 11, 12 & 13)	4:00 - 5:30pm
Leisure Swim	4:00 - 5:30pm

TUESDAY (CONTINUED)

Football (Years 9 & 10 - West Pitch)	4:00 - 5:30pm
Warhammer Club	4:00 - 5:30pm
Basketball Training (Gymnasium)	4:00 - 6:00pm
School Play Rehearsal	4:00 - 6:00pm
Netball Training/Fixtures (Years 7, 8, 9 & 10 - Netball Courts)	4:10 - 5:20pm
Badminton Club (Sports Hall)	4:30 - 5:30pm
Gymnastics Squad (Years 7 & 8 - Junior School Gym)	4:45 - 5:30pm
Basketball Fixtures (Sports Hall)	5:30 - 7:00pm
Boarders' Volleyball	7:00 - 8:15pm

WEDNESDAY

Morning Prayer	7.55am
Music Practice Suite Open	8:00am onwards
Library	8:30am - 5:25pm
Music Practice Suite Open	12:40 - 1:40pm
Choristers' Rehearsal	1:05 - 1:40pm
Game and App Creation Club	1:10 - 1:40pm
Spanish Linguists Club	1:10 - 1:40pm
Chess Club	1:10 - 1:40pm
Sixth Form Committee	1:15 - 1:40pm
Senior Netball Training/Fixtures	2:00 - 5:00pm
Music Practice Suite Open	3:50 - 6:30pm
Maths Clinic (Years 7, 8, 9,10 & 11 - Library)	4:00 - 4:40pm
Mini MUN (Years 6, 7 & 8)	4:00 - 5:00pm
Scrabble Club	4:00 - 5:00pm
Driving Club	4:00 - 5:00pm
Art Club	4:00 - 5:00pm
Science Workshop (every 2 nd Wed)	4:00 - 5:00pm
Music Technology (by appointment)	4:00 - 5:00pm
Robotics Club	4:00 - 5:00pm
Design and Technology Club (Years 10, 11, 12 & 13)	4:00 - 5:30pm
Table Tennis (Junior School Gym)	4:00 - 5:30pm
Football (Years 7 & 8 - West Pitch)	4:00 - 5:30pm
Hockey Club (Astro)	4:00 - 5:30pm
School Newspaper	4:00 - 5:30pm
Dance	4:00 - 5:30pm
Japanese Language Lessons	4:10 - 5:10pm
Senior Swim Squad	4:30 - 5:00pm

CO-CURRICULAR PROGRAMME

THURSDAY

Senior Swimming Squad	7:40 - 8:10am
Morning Prayer	7.55am
Music Practice Suite Open	8:00am onwards
Choristers' Rehearsal	8:20 - 8:50am
Library	8:30am - 5:25pm
Music Practice Suite Open	12:40 - 1:40pm
School Play Rehearsal	1:00 - 1:40pm
French Linguist Club	1:05 - 1:40pm
Russian Club	1:05 - 1:35pm
Barbershop Rehearsal	1:05 - 1:40pm
Music Theory Club Grades 1 - 5	1:05 - 1:45pm
Game and App Creation Club	1:10 - 1:40pm
STEM Club	1:10 - 1:40pm
Music Practice Suite Open	3:50 - 6:30pm
English GCSE Support	4:00 - 5:00pm
Programming Club	4:00 - 5:00pm
Swing Band	4:00 - 4:40pm
Jazz Band	4:45 - 5:30pm
Design and Technology Club (Years 10, 11, 12 & 13)	4:00 - 5:30pm
House Sport	4:00 - 5:30pm
Touch Rugby (West Pitch)	4:00 - 5:30pm
Guildhall Trinity Drama	4:00 - 6:00pm
A level Drama	4:00 - 6:00pm

FRIDAY

Morning Prayer	7.55am
Music Practice Suite Open	8:00am onwards
Library	8:30am - 5:25pm
Music Practice Suite Open	12:40 - 1:40pm
Junior Band	1:05 - 1:40pm
Barbershop	1:05 - 1:40pm
Eco Club	1:10 - 1:30pm
Typing Club	4:00 - 4:30pm
A level Maths Clinic	4:00 - 5:00pm
Music Technology	4:00 - 5:15pm
Puzzles and Games Club (Library)	4:00 - 5:15pm
Chamber Choir	4:00 - 5:30pm
Running Club (Sports Hall)	4:15 - 5:30pm
Focus Senior Football	4:15 - 5:30pm
Trampoline (Gymnasium)	4:30 - 5:30pm
Basketball Training/Fixtures	4:30 - 7:00pm
Boarders' Badminton	7:00 - 9:00pm
Croydon Astronomical Society (alternate weeks)	7:45pm

VIDEO PRODUCTION

Video Production Club - every weekday, equipment and assistance available.

PUPIL LEISURE POOL TIMES

Swimming times are listed each day. In addition, Boarders may also swim during the following sessions:

Saturday	12:00pm - 4:00pm
Sunday	7:00am - 4:00pm

BOARDING WEEKEND ACTIVITIES

Croydon Acquaintance Visit
Trips to London
Archery Trip
Thames Cable Car Trip or Trip to O2
Crafting
Ten Pin Bowling
Activity Weekend to Bowles
Pottery Painting
London Walk
Castle Visit
Ice-Skating at the Tower of London
Trip to Thorpe Park
Christmas Shopping Trip to Bluewater
Indoor Climbing
Go Karting
Museum and Exhibition Visits
Trampoline Centre
Dry Slope Skiing
Cinema
Brighton Trip
Rock Climbing
Sailing
Paintballing

SATURDAY AND SUNDAY

Activities continue throughout the weekend for both our Day and Boarding pupils including:

Swimming clubs
Combined Cadet Force and Duke of Edinburgh
Sporting fixtures
Music
Drama

THE CHAPEL

THE CHAPEL OF ST CHRISTOPHER AND THE INFANT JESUS



The Chapel of St Christopher and the Infant Jesus stands at the heart of the School community and is probably the most easily identifiable school building with its imposing tower and steeple, a landmark that can be seen for miles around. It was built as a War Memorial and contains the names of Old Russellians who lost their lives in the World Wars. It is, therefore, a constant reminder of their self-sacrifice and the cost of freedom that we all enjoy.

The Chapel provides a focal point for the celebration or commemoration of important occasions during the school year such as our Welcome Service, Harvest Festival, Remembrance, Advent, Passiontide and Easter services, in addition to special anniversary services such as the 150th Celebration in May 2003 at which our Patron, Her Majesty the Queen was present.

It is the School's own church where the boarding community attends a variety of worship on Sundays throughout the year, including Choral Evensong, Holy Communion and services led by pupils.

Each weekday morning, prayers are said for the life of the School. Chapel remains open all day for pupils and staff to find a quiet moment for reflection or to pray.

Junior and Senior School pupils attend weekly Chapel services, and take part in special services throughout the year.

School services encourage the spiritual and moral development of all our pupils, whatever their religious background. An experience of worship is offered. We explore a wide range of topics that enable pupils to learn how to respect and care for one other, adults and the wider community; and to learn how to treasure and sustain the natural environment and appreciate how religion that can lead people to understanding and fulfilment in their lives. Because of its importance to our community, attendance is compulsory for all pupils. Preparation for Confirmation in the Church of England is available.

The Chapel provides a splendid setting for musical recitals by the Choir and Choral Society and is regularly used for lunchtime concerts. The School Choristers also lead services such as Evensong and sing for occasional services such as weddings and baptisms.

The Music Department uses it, the Theology and Philosophy Department explores it, the Art Department draws and paints it, and everybody recognises it! It is a living building which is admired and appreciated by many.

Above all, its presence is a statement that the School recognises the need to remind ourselves of another dimension in our lives - be it specifically religious or broadly spiritual - and a place to which pupils and staff of all faiths or of none can come to experience peace and quiet, a special place in which to reflect on their own thoughts and, possibly, to find something they are seeking.



LIBRARY AND SIXTH FORM STUDY CENTRE

Situated in a bright, airy, purpose-built building with a dedicated Sixth Form Study Centre, the aim of the Library is to promote reading for both pleasure and information throughout life. There is a full time Chartered Librarian and a full time Library Assistant to help pupils find and utilise resources.

A wide range of stock supports both the academic and recreational interests of all pupils, including fiction and non-fiction books, DVDs, magazines, newspapers, games and puzzles as well as a comprehensive range of online resources. Sixth Formers have exclusive use of the study centre, on the first floor, which holds additional resources to support the A level curriculum and beyond, as well as university prospectuses, books on studying and working abroad, gap year schemes and volunteering projects. The Librarian works closely with the teaching staff to ensure that the stock is relevant to the curriculum requirements of all Key Stages and also caters for extra-curricular interests. Wi-Fi access is available throughout and, in addition, there are networked computers and printers/copiers/scanners for pupil use.

The Library is open before, during and after the school day, allowing pupils to use the facilities for homework, research and reading for pleasure. Classes and individuals visit to investigate topics and find resources during the school day, when Library staff are available to introduce them to specific collections and to teach information literacy skills. All new pupils are given an introduction to the Library and the Library staff also produce help guides and reading lists to help pupils make the most of the resources available.

We welcome pupil recommendations for additions to the Library and purchase wherever appropriate. Pupils are encouraged to write book reviews for publication on our Firefly VLE page to share their reading experience with others.

The Library runs a wide range of events to promote reading and learning. Lunchtime talks by members of staff and visiting speakers introduce pupils to topics beyond the scope of the curriculum thus opening up new areas to explore and enjoy. Pupils are also encouraged to contribute to the Library's activities and are welcome to volunteer for the lunchtime talks programme. The Library also organises workshops with celebrated authors; Stephen Davies, Stewart Ross and Matt Dickinson have all visited recently. Pupils also have the opportunity to take part in national writing and poetry competitions which are advertised and promoted by the Library.

The Library regularly marks World Book Day, National Poetry Day, Chinese New Year and other key dates with special events, competitions and celebrations. Pupils are invited to take part in the Trinity Schools' Book Award scheme each year and attend the award ceremony at the host school.

Each Friday we end the week with our Puzzles and Games Club. Popular with the younger pupils, the club enables pupils to have fun, improve their logical thinking and problem-solving skills and form friendships with pupils from all year groups.



SCHOLARSHIPS AND BURSARIES

The Royal Russell Scholarship and Bursary Scheme

Although the School traces its history back to generous philanthropic donations it no longer enjoys the support of a financial foundation and is dependent on fee income to support scholarship and bursary awards.

What is the difference between a Scholarship and a Bursary?

A scholarship is awarded in recognition of a pupil's merit and potential and is, as such, highly prized. Awards are determined by the results in the competitive entrance examination or by performance in assessments and auditions relating to Music, Drama and Sport and are awarded irrespective of financial means. Pupils may hold more than one type of scholarship and the total financial value of a scholarship may be between 5% and 25%. For Sixth Form pupils, Art scholarships are also available.

A bursary award is available to a small number of pupils who are offered a place but require financial assistance to be able to afford to accept it. Every bursary is means-tested and the value of the bursary is related to the income and financial resources of the pupil's family. A pupil can hold both a bursary and scholarship.

How does the Scholarship Scheme work?

Royal Russell School offers scholarships from Year 7 and above for excellence in overall Academic performance, Music, Drama, Sport and Art (Sixth Form only). Scholarships are awarded in recognition of achievement in these areas and, although the scholarship provides a percentage reduction in the School fees, we believe the financial benefit of a scholarship is secondary to the recognition of the pupil's potential for success. The award of a scholarship confers a status upon the holder which will go forward with them in their move to higher education. Scholarship holders are seen as an example to other pupils and are, therefore, expected to demonstrate high standards of work and behaviour in order to maintain their scholarship place. Scholarships are awarded through to completion of GCSE in Year 11 when re-assessment will take place for possible continuation for Sixth Form. Scholarships are subject to all normal terms and conditions in relation to the payment of fees.

Academic Scholarships

All applicants for Years 7 and 9 are considered for an academic scholarship on the basis of their performance in the entrance examinations at 11+ and 13+. A small number of Sixth Form scholarships are available for new pupils entering Year 12. Internal Sixth Form academic scholarships are awarded by the School based on achievement at GCSE.

Music Scholarships

A Music Scholarship is currently awarded to pupils showing strong musical ability and potential. A Music Scholarship entitles the recipient to a percentage reduction in school fees. Pupils holding Music Scholarships will be encouraged to maintain their commitment to music throughout their time in the school and we offer a programme of annual reviews with the Director of Music to reflect on musical progress in the past year and to set challenges for the year ahead.

Pupils are expected to attend a weekly lesson on their chosen instrument with a member of the Royal Russell Senior School Visiting Music Staff unless prior arrangements have been agreed with the Director of Music. Scholarships are intended to assist with the cost of individual music lessons for one orchestral instrument, as provided by the Royal Russell School Visiting Music Staff at school. The number of lessons per week will be in line with normal Royal Russell School procedure for the instrument played: on average 30 lessons per year.

By the time of their initial audition, our normal expectations for candidates for a Music Scholarship are:

- for entry in Year 7 Grade 4 Merit on their chosen orchestral instrument
- for entry in Year 9 Grade 5 Merit on their chosen orchestral instrument
- for entry in Year 12 Grade 6 Practical on their chosen orchestral instrument, with Grade 5 Theory

The relevant mark sheets must be provided to support this achievement at the time of the audition.

The Music Scholarship is awarded on the following understanding:

- the recipient is involved in a continuous regular programme of instrumental/vocal lessons with a member of the Royal Russell Senior School Visiting Music Staff

SCHOLARSHIPS AND BURSARIES (CONTINUED)

- the recipient is making constructive use of the lessons provided and a significant level of practice between lessons is apparent
- the recipient is playing an active role in musical events organised by the Music Department. All instrumentalists are expected to be a regular member of the School Orchestra and attend all related rehearsals and performances as a priority
- the recipient's parents are paying for the lessons as charged by the Visiting Music Staff on a termly basis payable in advance

Candidates meeting our normal requirements will be required to attend an audition with the Director of Music who will consider their skills and potential. The Scholarship audition will include a practical performance, sight reading and aural tests. Any candidates who have not obtained the required standard, but still think they may be worthy of a scholarship, must attend a pre-audition in order for a member of the Music Department to decide whether they show enough potential to go through to the main audition.

All applications require supporting documentary evidence including letters from the candidate's current school and music teachers.

Attendance at audition does not guarantee a successful application. We recognise, however, that children develop at different rates and unsuccessful applicants are encouraged to reapply when appropriate.

Drama Scholarships

A Drama Scholarship is currently awarded to pupils showing strong ability and potential in drama. Typically a candidate will be actively involved in external drama clubs and organisations and will have had many performance opportunities. Pupils holding Drama Scholarships will be encouraged to maintain their commitment to drama throughout their time in the school and we offer a programme of annual reviews with the Director of Drama to reflect on participation and progress in the past year and to set challenges for the year ahead.

A Drama Scholarship entitles the recipient to a percentage reduction in school fees.

The Drama Scholarship is awarded on the following understanding:

- the recipient makes constructive use of their drama skills and contributes actively to the school
- the recipient takes an active role in events and productions organised by the Drama Department
- normally the recipient is expected to study Drama at GCSE and A level

Candidates will be required to attend a set half-day group audition run by the Director of Drama who will consider their skills and potential.

During the audition, candidates will be asked to take part in drama games and work on an improvisation exercise with other candidates. Candidates will be asked about their involvement in drama, both at school and with external organisations. Certificates, awards and achievements should be brought to the audition. Candidates will also be asked to perform an individual prepared piece. The prepared piece should be a speech from a play which has been learnt by heart and which should take between two and three minutes to perform.

All applications require supporting documentary evidence including letters from the candidate's current school and external organisation.

Attendance at audition does not guarantee a successful application. We recognise, however, that children develop at different rates and unsuccessful applicants are encouraged to reapply when appropriate.

Sport Scholarships

A Sport Scholarship is currently awarded to pupils showing outstanding ability in one or more of our strongest sports: football, netball, hockey, tennis and cricket. A Sport Scholarship entitles the recipient to a percentage reduction in School fees and a unique personal training programme that offers support in their specific sport in order to help scholars achieve the limit of their potential.

SCHOLARSHIPS AND BURSARIES (CONTINUED)

An athlete will be supported according to the four corners of Elite Performance:

Tactical, Technical, Physical and Social. Here are some examples of what we offer:

- A specialist Sport Scholarship Tutor will personally support you
- A personal long term Athlete Development Model will be designed for you
- Hi Cam video feedback will give you better technical and tactical awareness
- An automatic place in the Sport Academy
- Regular fitness testing and a specific Personal Training Programme based on the athlete's results
- Position-specific one-to-one training sessions
- Sports Psychology Workshops to help with goal-setting
- Special guest appearances from sport people with elite experiences to share
- Statistical analysis to highlight strengths and weaknesses in the athlete's sport performance
- Opportunities, when ready, to connect with elite clubs in the sport using our personal network links

We are looking for outstanding applicants to join our Academy programme. Our normal expectations will be representation at County level and/or at a recognised Academy level or equivalent.

The Sport Scholarship is awarded on the following understanding:

- the recipient makes constructive use of their sport skills and contributes actively to the School
- the recipient takes an active role in fixtures, training and House sport that will take priority over external activities, except in the event of a clash through selection for representative teams at County level or above

All applications require supporting documentary evidence, including reports from the candidate's club(s) and current school. In some cases, submission of video evidence may be appropriate.

Pre-screened candidates will be invited to attend a set half-day assessment with the Sport Department who will consider their skills and potential. During the assessment, candidates will be observed in a number of different activities to include demonstration of set skills and their application in small-sided games, allowing accurate assessment to be made. Candidates will also participate in fitness tests, for example in speed and agility using speed gates.

Attendance on the assessment day does not guarantee a successful application. We recognise, however, that children develop and mature at different rates and unsuccessful applicants are encouraged to reapply when appropriate.

Art Scholarships (Sixth Form only)

Art Scholarships are only available in the Sixth Form.

An Art Scholarship entitles the recipient to a percentage reduction in school fees.

The Art Scholarship is valid throughout the period of tenure provided that:

- the recipient makes constructive use of their art skills and contributes actively to the school
- the recipient takes an active role in events organised by the Art Department
- the recipient is studying for A level Art and Design

Candidates will be required to attend an interview with the Head of Art. Candidates should bring a portfolio of work from which the Head of Art will consider their skills and potential. Candidates will also need to be prepared to discuss the work of a leading artist of their choice.

The final award of an Art Scholarship will be conditional upon GCSE results and will be confirmed in the August before entry.

How do parents apply for a Scholarship?

Enquiries about scholarships should be directed to the Registrar in the Senior School:

admissions@royalrussell.co.uk

SCHOLARSHIPS AND BURSARIES (CONTINUED)

All applicants at Year 7 and Year 9 are considered for an Academic Scholarship on the basis of their performance in the Entrance Exam. Sixth Form Scholarships are awarded on the basis of success at GCSE.

Those wishing to be considered for Music, Drama, Sports and Art Scholarships should notify the Registrar when submitting the Registration form. Auditions/assessments will be held separately to the entrance tests and candidates will be expected to make arrangements to attend on the set dates. All applications will require supporting documentary evidence.

How does the Bursary Scheme work?

There are two distinct types of bursary, those granted on entry to the School and hardship awards made post entry. Bursary awards on entry are normally made at age 11 (Year 7) though we will also consider applications from pupils age 13 (Year 9). Only in the most exceptional circumstances would bursary assistance be considered in the Junior School.

Hardship bursaries may be awarded to pupils whose families suffer unexpected financial challenges, and are having difficulty meeting the fees. These bursaries are designed to help a pupil complete a phase of education, i.e. to complete GCSEs or A levels, and are normally of a relatively short duration to tide a family over a particular problem. In the case of pupils lower down the School, bursary awards are intended to provide parents with the opportunity to reassess and consider alternative schools.

Both forms of bursary are means-tested, are subject to review and may be adjusted. A bursary may be withdrawn or past payment reclaimed if the School is knowingly or recklessly provided with false information on income or assets.

How many Bursaries are awarded?

Each year there are a small number of Year 7 bursaries for 100% of the fees (Foundation Bursaries) and these will normally only be considered for pupils from families with a total gross income of less than £20,000 and with no capital assets other than their home. A number of smaller bursaries are awarded and these may range from 10% to a maximum of 90%, dependant on individual financial circumstances. All cases are considered on their merits but it is highly unlikely that any significant bursary award would be made to a family with gross income of more than £40,000 per annum.

How do parents apply for a Bursary?

Whilst the decision on a bursary award rests with the Headmaster, enquiries about bursaries, whether on entry or hardship, should in the first instance be directed to the Personal Assistant to the Operations Director, Mrs Donna Moon: moond@royalrussell.co.uk

Parents wishing to be considered for a bursary on entry at Year 7 or Year 9 must indicate this on their Registration Form and complete a confidential Statement of Financial Circumstances Form (SOFC) which will be sent to them by the PA to the Operations Director.

If the results of the January entrance examination indicate that the pupil has performed strongly enough for consideration of a bursary, the SOFC will be used to assess whether a bursary may be available. If this is the case, parents will be given an indication of the likely bursary value when the offer of a place is made. The School may require a meeting with parents to discuss the financial assessment before finalising any offer. The School reserves the right to require independent verification of the information provided on the form.

Aspects Common to both Scholarships and Bursaries

In order that parents can budget, all scholarships and almost all bursaries are 'index linked' in that they are awarded as a percentage of the published fees, so that when the fee increases the scholarship/bursary automatically increases.

All scholarships and bursaries are awarded at the discretion of the Headmaster who is accountable to the Governors for all decisions.

Scholarships and bursaries may be withdrawn at the discretion of the Headmaster in the event of unsatisfactory work or conduct or as a result of the pupil's annual review. This action may occur as the culmination of a process of communication and discussion between the School and the parents.

OUR HISTORY AND ROYAL PATRONAGE

OUR HISTORY

Royal Russell School is proud to be able to date its heritage back to 1853, when a group of clerks from the wholesale warehouses in the City of London set up a charity to look after orphans from the families of their trade.

Within a year, they had more than a thousand subscribers and a school was purchased. Lord John Russell, who had recently been the Prime Minister, agreed to become President of the School.

Charles Dickens, who published his book 'Bleak House' in 1853, made the following comment about those who supported our school in a speech at the London Tavern in 1857. *'This is a school which can provide such a home as their own dear children might find happy refuge in, if they themselves were taken early away. And I fearlessly ask you, is this not a design which has claim to your sympathy? Is it not the sort of school which is deserving of your support?'*

By 1866, the School had grown considerably and moved to new buildings which were opened by The Prince of Wales and, in 1924, Edward, Prince of Wales, laid the foundation stone for the current Chapel on the new Ballards site. The current school that was built on the Ballards estate was, in part, a memorial to the former pupil war dead. The original mansion stood at the top of what we now know as Cambridge Slope and the current Headmaster's House is all that remains of it today. The Ballards mansion did not provide sufficient accommodation to house both teaching and boarding facilities, so Sir Aston Webb was asked to design the new buildings. Sir Aston Webb was President of The Royal Academy and is famous for designing the front of Buckingham Palace, Admiralty Arch as well as other well known landmarks.

In the early 1970s, the Junior School opened, this time without boarders and many more day pupils were taken into the Senior School.

At that time, the Senior School had three boys' houses and just one girls' house. It quickly became apparent that this situation needed to be changed with greater numbers in the School and new day houses were built. Boarding house life was considered a more friendly and personal environment than the basic class system and this was the reason for maintaining the House System for the day pupils.

Since the 1970s, the School has gone from strength-to-strength and new facilities have been built. The status of being a HMC school is one to be proud of and is testament to the dedication of all those concerned with the running of the School.

ROYAL PATRONAGE

Royal Russell has enjoyed Royal Patronage from its foundation and Her Majesty The Queen has visited the School on four occasions.

Her first visit was in 1950 as Princess Elizabeth; in 1963 she opened Cambridge House and the Practical Block: she attended the celebration marking our School's 125th year in 1978, and most recently, our sesquicentenary in 2003.



HRH Prince Edward, The Earl of Wessex, opened our new Performing Arts Centre in December 2010.

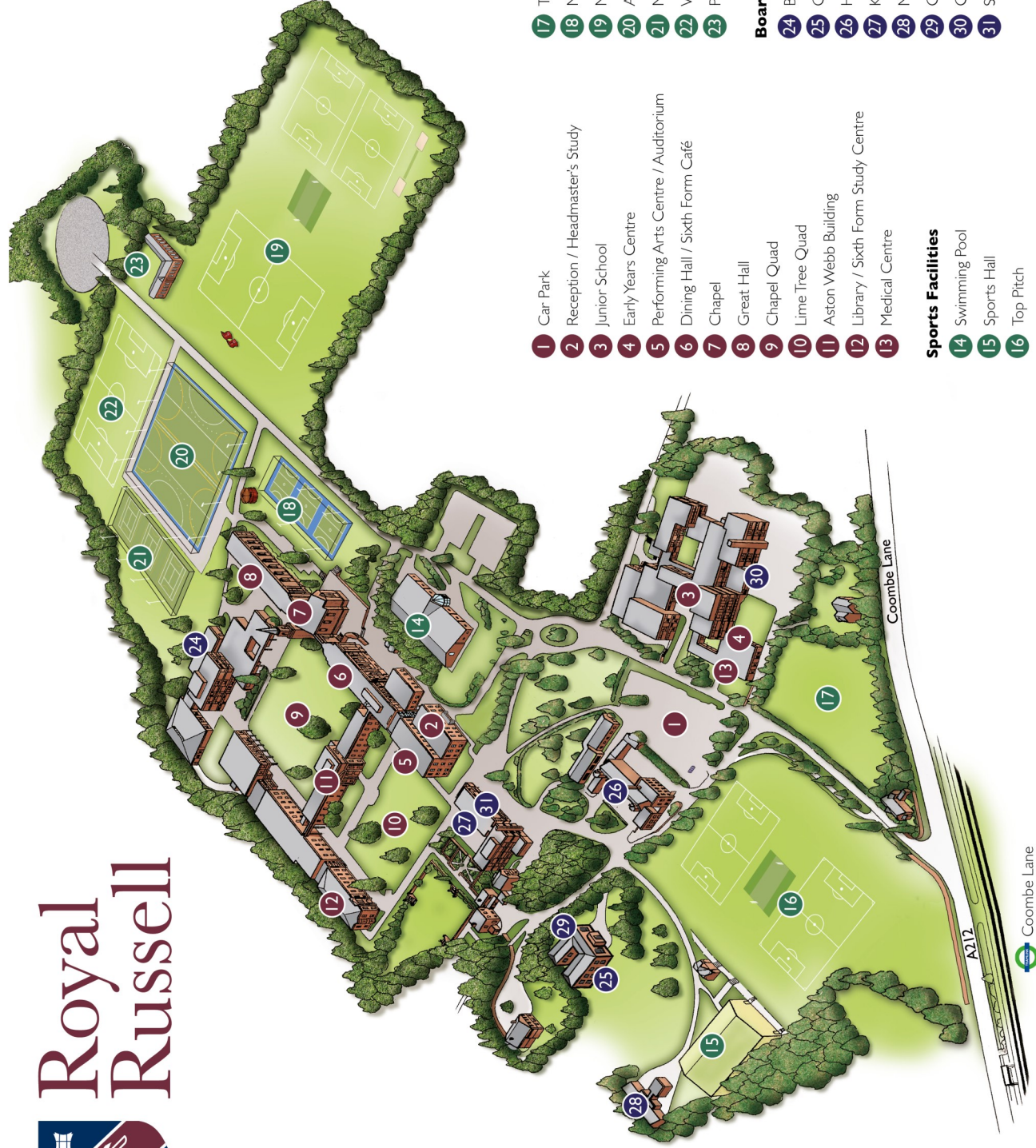
The School celebrated the occasion of Her Majesty's Diamond Jubilee in June 2012 and received a personal message of good wishes from The Queen.



In June 2016, our pupils were invited to attend the Patron's Lunch event and join the spectacular parade along The Mall, to celebrate Her Majesty's 90th Birthday.

THE ROYAL RUSSELL SCHOOL ESTATE

Royal Russell



- | | |
|---------------------------------------|--------------------------------|
| 1 Car Park | 17 The Paddock |
| 2 Reception / Headmaster's Study | 18 Netball Courts |
| 3 Junior School | 19 North Pitch |
| 4 Early Years Centre | 20 AstroTurf Pitch |
| 5 Performing Arts Centre / Auditorium | 21 MUGA (Multi-Use Games Area) |
| 6 Dining Hall / Sixth Form Café | 22 West Pitch |
| 7 Chapel | 23 Pavilion |
| 8 Great Hall | |
| 9 Chapel Quad | Boarding / Day Houses |
| 10 Lime Tree Quad | 24 Buchanan / Reade |
| 11 Aston Webb Building | 25 Cambridge |
| 12 Library / Sixth Form Study Centre | 26 Hollenden |
| 13 Medical Centre | 27 Keable |
| | 28 Madden |
| | 29 Oxford |
| | 30 Queen's |
| | 31 St Andrew's |

Sports Facilities

- 14 Swimming Pool
- 15 Sports Hall
- 16 Top Pitch

A212
Coombe Lane



www.royalrussell.co.uk

Royal Russell School, Coombe Lane, Croydon, Surrey, CR9 5BX

